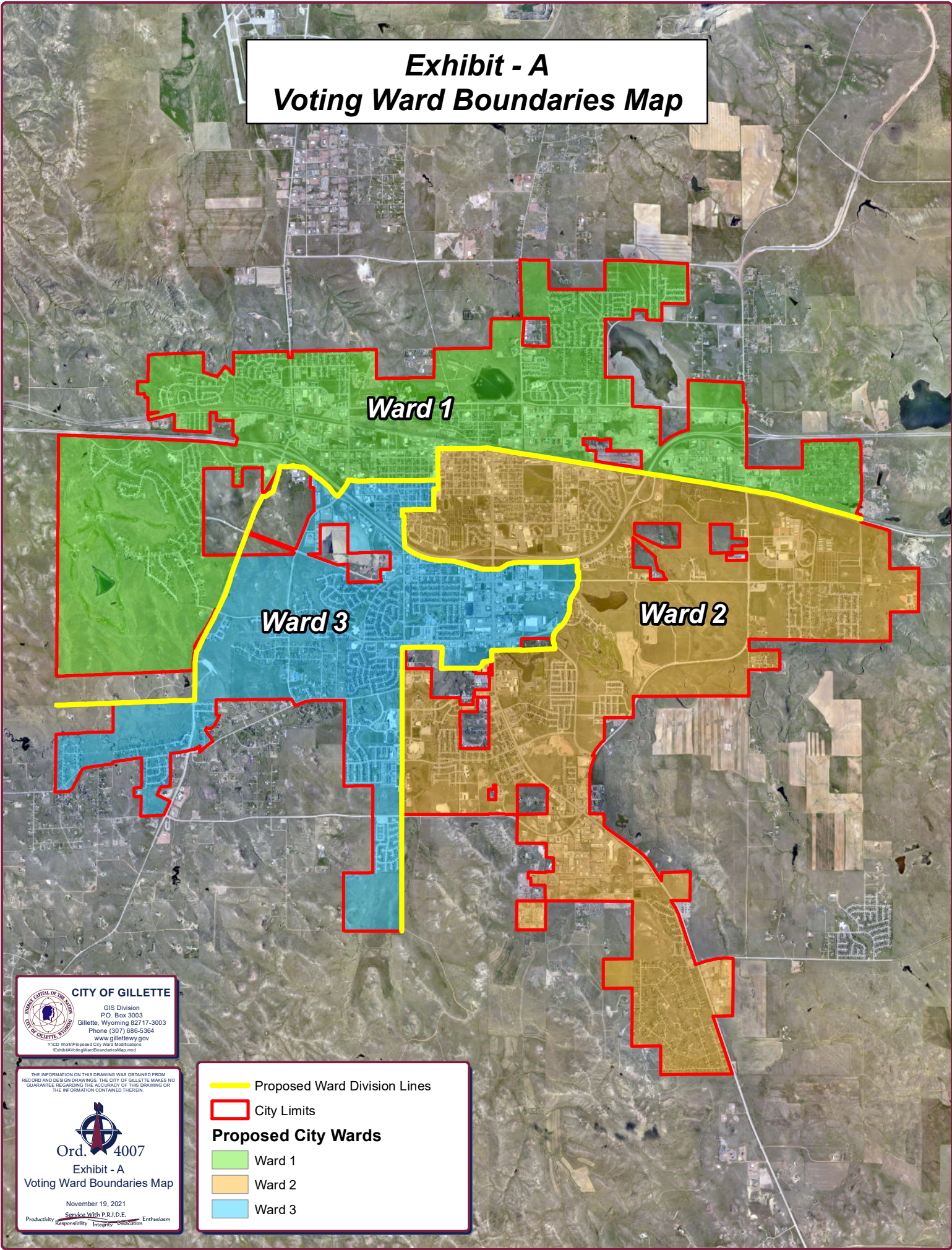


# Exhibit - A Voting Ward Boundaries Map




**Ward 1**

**Ward 3**

**Ward 2**

**CITY OF GILLETTE**  
GIS Division  
P.O. Box 3003  
Gillette, Wyoming 82717-3003  
Phone (307) 686-5364  
www.gillettewy.gov  
Y:\GIS\Work\Proposed City Ward Modifications  
8/26/2021\WardBoundariesMap.mxd

THE INFORMATION ON THIS DRAWING WAS OBTAINED FROM RECORD AND DESIGN DRAWINGS. THE CITY OF GILLETTE MAKES NO GUARANTEE REGARDING THE ACCURACY OF THIS DRAWING OR THE INFORMATION CONTAINED THEREIN.

  
**Ord. 4007**  
Exhibit - A  
Voting Ward Boundaries Map  
November 19, 2021  
Productivity Service With P.R.I.D.E. Enthusiasm  
Responsibility Integrity Dedication

— Proposed Ward Division Lines  
— City Limits

**Proposed City Wards**

- Ward 1
- Ward 2
- Ward 3