



CITY OF GILLETTE

Administration

201 E. 5th Street • Gillette, Wyoming 82716
Phone 307.686.5203 • Fax 307.686.1593
www.gillettewy.gov

MEMORANDUM

TO: Mayor and Members of the City Council
FROM: Michael Cole, City Administrator
RE: General Information
DATE: December 22, 2023

The following meetings are scheduled for the week of **December 23-29, 2023**

Monday, December 25th - Christmas Day Holiday, **City Offices Closed**

1. Attached please find a **news release** regarding **City Facilities Closed December 25, 2023** provided by **Public Affairs Director Toscana**.
2. Attached please find **Economic Development News** dated **December 2023** provided by **Energy Capital Economic Development**.
3. Attached please find a **press release** regarding **Wyoming's Population Continues to Increase** dated **December 19, 2023** provided by the **Wyoming Department of Administration & Information Economic Analysis Division**.

MHC/adw

News

City Facilities Closed December 25, 2023

Post Date: 12/20/2023 8:50 AM

City of Gillette facilities will be closed on Monday, December 25, 2023 for Christmas.

There will be no trash pick up on Monday, December 25. Solid waste crews will run a double route on Tuesday, December 26 to pick up trash and recycling for both Monday and Tuesday routes.

[Return to full list >>](#)



Angela Williams <angelaw@gillettewy.gov>

Economic Development News

1 message

Energy Capital Economic Development <info@energycapital.com>

Tue, Dec 19, 2023 at 11:24 AM

Reply-To: info@energycapital.com

To: angelaw@gillettewy.gov

Our Mission: To stimulate and facilitate a diverse economy through business retention, expansion, and recruitment



Economic Development

Energy Capital Economic Development continues to work for the economic betterment of Campbell County. Here are some activities that we would like to share with you.

CEO Corner with Phil Christopherson



A Year of Remarkable Achievements in Gillette's Economic Development

As we prepare to wrap up an eventful year and embrace the promise of a new one, we can't help but reflect on the incredible strides we have taken in 2023. Despite the challenges, uncertainties, and changing dynamics of our world, our community has demonstrated remarkable resilience and innovation.

Today, we are thrilled to highlight some of the standout successes that have illuminated our local economy.

1. Wyoming Innovation Center (WyIC): Fostering Innovation and Growth

The Wyoming Innovation Center (WylC) continues to shine as a beacon of progress. Since its inception, WylC has served as a nurturing ground to advance coal to products technology, offering essential resources and a collaborative environment where ideas flourish. In 2023, WylC fully came online and has three projects starting up. The University of Wyoming School of Energy Resources has a major coal to products project and is utilizing office space and the largest test pad. The National Engineering and Technology Lab (NETL) will be spooling up their Rare Earth Elements from coal fly ash project sometime in the spring. And JCOAL is utilizing some of our workspace for their ongoing project at the Integrated Test Center.



2. FUEL Business Incubator: Igniting Entrepreneurial Passion



The FUEL Business Incubator remains a cornerstone of hope and opportunity for aspiring entrepreneurs and our entrepreneurial ecosystem. Throughout the past year, FUEL has played a pivotal role in cultivating talent and groundbreaking ideas. In 2023, we brought back the startup concept that had been very strong but went away during Covid. The Startup Challenge started early in 2023 and has just completed the pitch night competition last week. See the article later in this newsletter about the contestants and their great work. At the present time the FUEL building is almost full with only a couple of offices and the shop space available. This is very exciting as each of the member businesses represents a potentially game-changing business for Gillette.

3. Office of Economic Transformation (OET) at Gillette College: A Catalyst for Change

Gillette College's Office of Economic Transformation (OET) has been instrumental in assisting Energy Capital ED in fulfilling our mission. ECED has a staff of three and we are stretched very thin most of the time. The OET has been able to work with us to bring new opportunities to Gillette with work on housing, federal grants, business relocations, state and federal coordination and much more. We look forward to continuing our partnership in the coming year.

4. Integrated Test Center (ITC): Pioneering Clean Energy Solutions



The Integrated Test Center (ITC) stands as a testament to Wyoming's commitment to innovation in supporting our energy sector and advancing technology that will keep our mines in operation for years to come. Whether or not someone believes that CO₂ and climate change is a problem, the reality is that most of the nation and elected leaders believe that it is an important issue. We can engineer solutions to this perceived problem and keep coal and

natural gas as clean energy solutions far into the future. The ITC is making great strides in this effort.

5. Community Unity: The Foundation of Our Success

Perhaps the most heartening aspect of 2023 has been the unwavering spirit of collaboration within our community. Local businesses, government agencies, and organizations like Energy Capital Economic Development have joined forces to support one another. This collaborative effort has produced innovative solutions, shared resources, and a more resilient and diversified local economy.

A Glimpse of the Future: Bright Horizons for Gillette

As we turn the page on 2023, a profound sense of hope and optimism surrounds Gillette's local economy. The successes we've celebrated this year, from the Wyoming Innovation Center to the FUEL Business Incubator, the Office of Economic Transformation, and the Integrated Test Center, underscore the resilience and innovation that define our community.

With a steadfast commitment to nurturing entrepreneurship, fostering local talent, and supporting our businesses, we stand ready for further growth and prosperity in 2024. Together, we will continue building a more diversified, sustainable, and inclusive local economy that benefits every member of our community.

In closing, we extend our heartfelt gratitude to the individuals, businesses, and organizations that have contributed to Gillette's economic journey in 2023. The path forward is filled with promise, and we look forward to another year of progress, collaboration, and shared success.

Warmest wishes for a Merry Christmas and a prosperous New Year!

ECED Project Update

Energy Capital Startup Challenge

Several years ago, Gillette College put on Startup Weekends. These were jam packed weekends that started Friday afternoon and concluded Sunday evening. The weekends were led by John McGuire who was the head of the business department at the college. Shortly before Covid John passed away and is sorely missed. During Covid these events were suspended and now Energy Capital ED (ECED) is resurrecting the effort in partnership with IMPACT307. IMPACT307 is the University of Wyoming's incubator network across the state.



ENERGY CAPITAL
START-UP CHALLENGE



There is quite a bit of difference between the previous startup weekends and the Startup Challenge that ECED and IPACT307 have just completed. The primary differences are 1. The Startup Challenge is a competition that takes a couple of months to complete and 2. Cash awards for the top three finalists. ECED has raised \$50,000 for this competition and a panel of judges will award varying amounts to the top three contenders.

There were 37 applicants to the inaugural Energy Capital Startup Challenge. The businesses were of all different types from training and education to retail and product manufacturing. These businesses were at all stages as well – some are new concepts that are just at the idea stage, while others are in business and have their products ready to move to the next stage. After a rigorous review by the panel of judges, nine finalists were selected to present their business to the panel of judges. From the nine finalists there were five that were chosen to move forward to the pitch night. The five finalists chosen by the panel of judges are:



- **Wind Turbine Blade Recycling**, Cameron Anderson and Jess Anderson: Developing a company that will recycle wind turbine blades that have reached-end-of-life and produce usable materials as an alternative to landfill disposal.
- **Baldacci Guitars**, Conner Baldacci: Startup manufacturer of high quality, custom electric guitars that allow guitar players and tour artists to achieve a range of sounds without having to swap out different guitars.
- **Rather Be Fishing Tackle**, Ray Bergeman: Developer of a fishing device that helps attract fish and get them feeding, increasing the chances of getting bites and catching more fish during outings.
- **Ag Innovations**, Shondah and Randall Otwell: Creator of a low power water rippling product that keeps stock tank water open for livestock in extreme winter temperatures to support the ranching and agriculture industries.
- **Inflatrix**, Mark Thoreson: Developer of a high-tech polymer inflatable device used by dentists to make the placement of dental fillings simpler, more efficient, and more comfortable.

Pitch night was held on Tuesday, December 12 and three winners were selected to share in the investment fund of \$50,000. Those three selected are:

- Baldacci Guitars, Conner Baldacci
- Wind Turbine Blade Recycling, Cameron Anderson and Jess Anderson
- Ag Innovations, Shondah and Randall Otwell

Here is a link to the YouTube recording of the event:

[12-12-23 Energy Capital Startup Challenge Pitch Night](#)

This event would not have been possible without the help and support of our sponsors. They provided the seed money for the challenge and deserve our thanks and recognition for their generous donations.

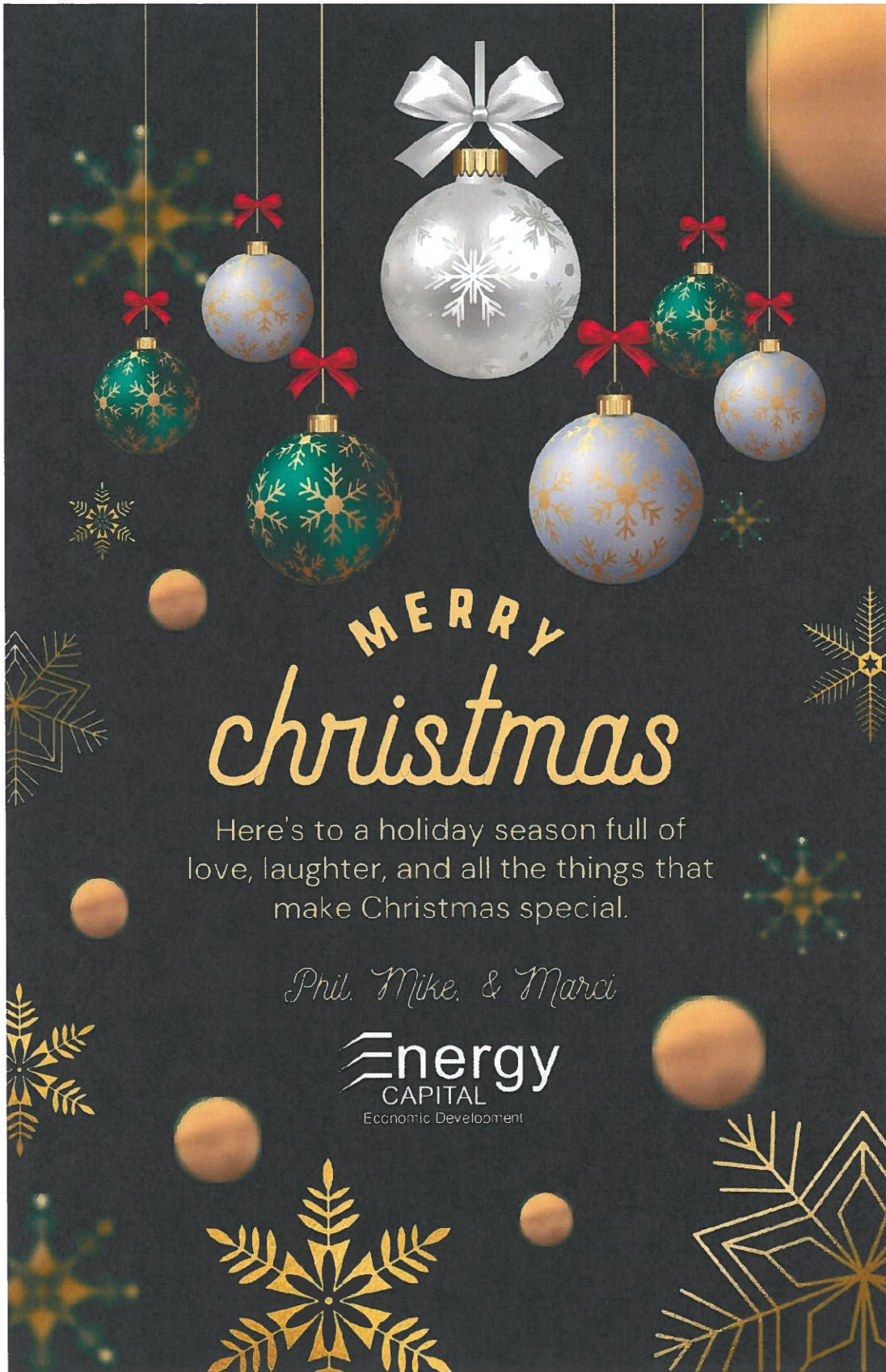
Sponsors:

- Campbell County
- FUEL Business Incubator
- Energy Capital Economic Development
- University of Wyoming
- Tyler Sasse
- Chamber of Commerce
- Komatsu
- Pinnacle Bank
- Powder River Construction

Our judges put in a tremendous amount of time reviewing applications, evaluating contestants, judging the event and much more. Thank you to our panel of judges:

- Sam Clikeman
- Kevin Couch
- Lance Walker
- Toni Bell

We plan to hold the next Energy Capital Startup Challenge in Fall of 2024. If you want to participate as a contestant, a sponsor or a judge watch future newsletters, Facebook page, LinkedIn pages for announcements. The challenge will start planning very soon so if you want to help plan give us a call.



Upcoming Community Events

12/22 - 12/28 - [Skate Around the Christmas Tree](#)

- 12/27 - 12/28 - [Blood Drive - Guns n' Hoses](#)
- 12/31 - [21st Annual Kissack Water & Oil's New Year's Eve Buck & Ball](#)
- 1/6 - [Plasma Table Saw Blade MakerClass](#)
- 1/9 - [Chamber Speaker Series](#)
- 1/12 & 1/13 - [Gillette Wild Hockey](#)
- 1/18 - [January Mixer- True Colors Cosmetology School](#)
- 1/18 - [CAM-PLEX Cinema Series: Ice Age: Dawn of the Dinosaurs](#)
- 1/20 - [2nd Annual Dodgeball Tournament](#)
- 1/20 - [2024 Annual Campbell County Charity Chili Cookoff](#)
- 1/27 - [22nd Annual Art Matters Auction & Gala Fundraiser](#)
- 1/28 - [2024 Wedding Expo - Bash.Co Bridal & Formalwear](#)
- 1/30 - [Daniel Tiger's Neighborhood LIVE: King for a Day!](#)
- 2/1 - [Eggs & Issues 2024](#)
- 2/3, 2/9, 2/10, 2/16, 2/17, 2/23 & 2/24 - [Gillette Wild Hockey](#)
- 2/7 - [Ribbon Cutting for Healing Hearts Hospice](#)

Visit our website



VISIONARY[™]
Business Class Internet

High-speed internet at the ECED Enterprise Center is provided by [Visionary Broadband](#).

Energy Capital Economic Development | P.O. Box 3948, [345 Sinclair](#), [Gillette, WY 82718](#)

[Unsubscribe angelaw@gillettewy.gov](mailto:angelaw@gillettewy.gov)

[Update Profile](#) | [Constant Contact Data Notice](#)

Sent by info@energycapital.com powered by



Try email marketing for free today!

Links contained in this email have been replaced. If you click on a link in the email above, the link will be analyzed for known threats. If a known threat is found, you will not be able to proceed to the destination. If suspicious content is detected, you will see a warning.



ECONOMIC ANALYSIS DIVISION

Mark Gordon, Governor | Patricia L. Bach, Director | Wenlin Liu, Administrator

FOR IMMEDIATE RELEASE

Tuesday, December 19, 2023

Contact: Amy Bittner, Principal Economist

WYOMING'S POPULATION CONTINUES TO INCREASE

CHEYENNE -- Wyoming's total resident population grew to 584,057 in July 2023, according to estimates just released by the U.S. Census Bureau. The annual increase from July 2022 was 2,428 persons, or 0.4%. This increase was slightly higher than the 0.3% growth that occurred in 2022. There are two factors that contribute to population change: natural change and net migration. The natural change is the number of births less the number of deaths. Wyoming had 5,882 births less 5,779 deaths for a natural increase of 103 persons from July 2022 to July 2023. This reversed the trend in the July 2022 estimates where Wyoming's deaths outnumbered births, which was the first time in decades that the number of deaths surpassed births. Estimated net migration is in-migration less outmigration. Wyoming's net migration was 2,338. This positive net migration means that 2,338 more persons moved into Wyoming than moved out of the State between July 2022 and July 2023.

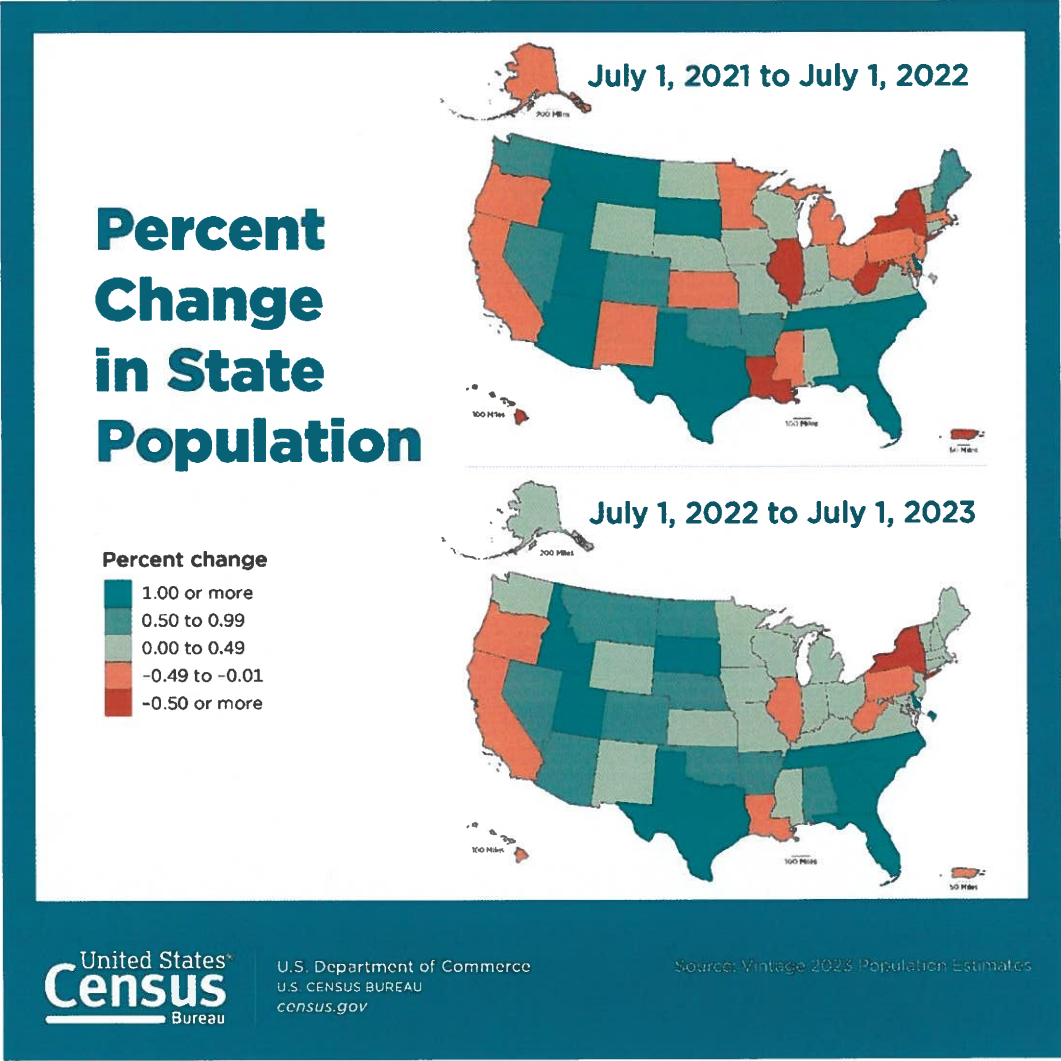
The rate of U.S. population growth was slightly higher than Wyoming, 0.5%. The U.S. added more than 1.6 million persons from July 2022 to July 2023. The South region of the U.S. is still driving the increase in population. This region accounted for 87% of the U.S. population growth in 2023. South Carolina had the largest percentage increase in population over the year, 1.7%, followed by Florida and Texas, both were 1.6%. All of Wyoming's neighboring states experienced growth over the year with Idaho and Utah cracking the top ten states with the largest annual percentage increases in population, 1.3% and 1.1%, respectively. Wyoming's annual percentage growth ranked 24th highest in the nation. Texas had the largest numeric increase in population from July 2022 to July 2023 with 473,453 persons.

Forty-two states and the District of Columbia gained population in July 2023. The Northeast region was the only region to experience population decline over the year, -0.1%. This was driven by losses of population in New York and Pennsylvania. Of the four regions of the U.S., the West had the second highest increase in population, but the western states of California, Oregon, and Hawaii continued to lose population.

Although U.S. population growth is still historically low, the gain in population in 2023 was the largest increase since 2018. The new data shows that population trends are returning to pre-pandemic norms. This is evidenced by a decrease in annual deaths and U.S. migration returning to pre-pandemic levels. The primary driver of U.S. growth was net international migration which added 1.1 million to the population. "Wyoming followed a parallel pattern to other states, where the number of deaths in 2023 was lower than the number in 2022," according to Amy Bittner, Principal Economist with the State of Wyoming Economic Analysis Division. During the pandemic, half of the states experienced a natural decrease in population, which means there were more deaths than births.

Similar to other states, Wyoming's economy continued to rebound from the COVID pandemic. In July 2023, Wyoming's unemployment rate was 3.0%, which was one of the lowest rates for Wyoming since July 2008. Wyoming's unemployment rate was lower than the U.S rate of 3.5%. Total employment in Wyoming in July 2023 was 2.2% higher than in July 2022. According to Bittner, "The state's employment picture was much brighter than three years earlier when the COVID-19 pandemic hit. Economic

opportunities are typically what drives people to move into an area.” Wyoming’s population growth in 2023 was driven by more people moving into state than moving out. “The State’s rebounding economy and the changing landscape of how people work, such as teleworking opportunities, could be contributing factors as to why people are moving into Wyoming,” Bittner stated.



Other Wyoming population data, including the 2020 Census are available on the Economic Analysis Division’s website, <http://eadiv.state.wy.us>

Table 1. Annual Estimates of the Resident Population for the United States, Regions, and States: April 1, 2020 to July 1, 2023

Geographic Area	April 1, 2020 Estimates Base	Population Estimate (as of July 1)			
		2020	2021	2022	2023
United States	331,464,948	331,526,933	332,048,977	333,271,411	334,914,895
Northeast	57,614,141	57,430,477	57,243,423	57,026,847	56,983,517
Midwest	68,987,296	68,969,794	68,850,246	68,783,028	68,909,283
South	126,268,529	126,465,281	127,353,282	128,702,030	130,125,290
West	78,594,982	78,661,381	78,602,026	78,759,506	78,896,805
Alabama	5,024,294	5,031,864	5,050,380	5,073,903	5,108,468
Alaska	733,374	732,964	734,923	733,276	733,406
Arizona	7,157,902	7,186,683	7,272,487	7,365,684	7,431,344
Arkansas	3,011,490	3,014,348	3,028,443	3,046,404	3,067,732
California	39,538,212	39,503,200	39,145,060	39,040,616	38,965,193
Colorado	5,773,707	5,785,219	5,811,596	5,841,039	5,877,610
Connecticut	3,605,912	3,577,586	3,603,691	3,608,706	3,617,176
Delaware	989,946	991,862	1,004,881	1,019,459	1,031,890
District of Columbia	689,548	670,839	669,037	670,949	678,972
Florida	21,538,216	21,591,299	21,830,708	22,245,521	22,610,726
Georgia	10,713,771	10,732,390	10,790,385	10,913,150	11,029,227
Hawaii	1,455,274	1,451,181	1,446,745	1,439,399	1,435,138
Idaho	1,839,117	1,849,339	1,904,537	1,938,996	1,964,726
Illinois	12,813,469	12,790,357	12,690,341	12,582,515	12,549,689
Indiana	6,785,442	6,789,098	6,813,798	6,832,274	6,862,199
Iowa	3,190,427	3,190,904	3,197,944	3,199,693	3,207,004
Kansas	2,937,835	2,938,124	2,937,946	2,936,716	2,940,546
Kentucky	4,506,297	4,508,155	4,507,600	4,511,563	4,526,154
Louisiana	4,657,785	4,652,022	4,627,047	4,588,023	4,573,749
Maine	1,363,177	1,364,517	1,378,787	1,389,338	1,395,722
Maryland	6,177,253	6,173,689	6,175,045	6,163,981	6,180,253
Massachusetts	7,032,933	6,997,713	6,991,951	6,982,740	7,001,399
Michigan	10,077,674	10,070,627	10,038,117	10,033,281	10,037,261
Minnesota	5,706,804	5,710,578	5,717,968	5,714,300	5,737,915
Mississippi	2,961,306	2,958,409	2,949,582	2,938,928	2,939,690
Missouri	6,154,889	6,154,426	6,170,393	6,177,168	6,196,156
Montana	1,084,244	1,087,211	1,106,366	1,122,878	1,132,812
Nebraska	1,961,965	1,963,273	1,964,253	1,968,060	1,978,379
Nevada	3,104,617	3,115,840	3,146,632	3,177,421	3,194,176
New Hampshire	1,377,524	1,378,702	1,387,494	1,399,003	1,402,054
New Jersey	9,289,039	9,272,392	9,269,175	9,260,817	9,290,841
New Mexico	2,117,525	2,118,488	2,116,950	2,113,476	2,114,371
New York	20,202,320	20,104,710	19,854,526	19,673,200	19,571,216
North Carolina	10,439,459	10,453,812	10,567,100	10,695,965	10,835,491
North Dakota	779,079	779,563	777,982	778,912	783,926
Ohio	11,799,331	11,798,292	11,765,227	11,759,697	11,785,935
Oklahoma	3,959,411	3,965,234	3,991,634	4,019,271	4,053,824
Oregon	4,237,279	4,245,044	4,256,465	4,239,379	4,233,358
Pennsylvania	13,002,788	12,995,477	13,013,614	12,972,091	12,961,683
Rhode Island	1,097,371	1,096,444	1,097,092	1,093,842	1,095,962
South Carolina	5,118,422	5,132,151	5,193,848	5,282,955	5,373,555
South Dakota	886,668	887,852	896,299	909,869	919,318
Tennessee	6,910,786	6,926,091	6,963,709	7,048,976	7,126,489
Texas	29,145,459	29,234,361	29,561,286	30,029,848	30,503,301
Utah	3,271,614	3,283,982	3,339,284	3,381,236	3,417,734
Vermont	643,077	642,936	647,093	647,110	647,464
Virginia	8,631,373	8,637,193	8,657,348	8,679,099	8,715,698
Washington	7,705,267	7,724,566	7,741,433	7,784,477	7,812,880
West Virginia	1,793,713	1,791,562	1,785,249	1,774,035	1,770,071
Wisconsin	5,893,713	5,896,700	5,879,978	5,890,543	5,910,955
Wyoming	576,850	577,664	579,548	581,629	584,057

Vintage 2023 data products are associated with Data Management System projects P-6000042, P-7501659, and P-7527355. The U.S. Census Bureau reviewed these data products for unauthorized disclosure of confidential information and approved the disclosure avoidance practices applied to this release (CBDRB-FY24-0085).

Note: The estimates are developed from a base that integrates the 2020 Census, Vintage 2020 estimates, and (for the U.S. only) 2020 Demographic Analysis estimates. For population estimates methodology statements, see <https://www.census.gov/programs-surveys/popest/technical-documentation/methodology.html>. See Geographic Terms and Definitions at <https://www.census.gov/programs-surveys/popest/guidance-geographies/terms-and-definitions.html> for a list of the states that are included in each region. All geographic boundaries for the 2023 population estimates series are as of January 1, 2023.

Table 2. Estimates of Resident Population Change and Rankings for the United States, Regions, and States: July 1, 2022 to July 1, 2023

Geographic Area	Population Estimate (as of July 1)		Change, 2022 to 2023		National Ranking of Regions and States			
	2022	2023	Number	Percent	Population Estimate (as of July 1)		Change, 2022 to 2023	
					2022	2023	Number	Percent
United States	333,271,411	334,914,895	1,643,484	0.5	(X)	(X)	(X)	(X)
Northeast	57,026,847	56,983,517	-43,330	-0.1	4	4	4	4
Midwest	68,783,028	68,909,283	126,255	0.2	3	3	3	2
South	128,702,030	130,125,290	1,423,260	1.1	1	1	1	1
West	78,759,506	78,896,805	137,299	0.2	2	2	2	3
Alabama	5,073,903	5,108,468	34,565	0.7	24	24	11	16
Alaska	733,276	733,406	130	-	48	48	43	43
Arizona	7,365,684	7,431,344	65,660	0.9	14	14	7	12
Arkansas	3,046,404	3,067,732	21,328	0.7	33	33	19	15
California	39,040,616	38,965,193	-75,423	-0.2	1	1	50	46
Colorado	5,841,039	5,877,610	36,571	0.6	21	21	9	18
Connecticut	3,608,706	3,617,176	8,470	0.2	29	29	30	33
Delaware	1,019,459	1,031,890	12,431	1.2	45	45	26	6
District of Columbia	670,949	678,972	8,023	1.2	49	49	31	7
Florida	22,245,521	22,610,726	365,205	1.6	3	3	2	2
Georgia	10,913,150	11,029,227	116,077	1.1	8	8	4	10
Hawaii	1,439,399	1,435,138	-4,261	-0.3	40	40	45	49
Idaho	1,938,996	1,964,726	25,730	1.3	38	38	17	4
Illinois	12,582,515	12,549,689	-32,826	-0.3	6	6	49	48
Indiana	6,832,274	6,862,199	29,925	0.4	17	17	14	22
Iowa	3,199,693	3,207,004	7,311	0.2	31	31	32	34
Kansas	2,936,716	2,940,546	3,830	0.1	35	34	36	38
Kentucky	4,511,563	4,526,154	14,591	0.3	26	26	25	29
Louisiana	4,588,023	4,573,749	-14,274	-0.3	25	25	48	50
Maine	1,389,338	1,395,722	6,384	0.5	42	42	33	21
Maryland	6,163,981	6,180,253	16,272	0.3	19	19	24	32
Massachusetts	6,982,740	7,001,399	18,659	0.3	16	16	22	31
Michigan	10,033,281	10,037,261	3,980	-	10	10	35	41
Minnesota	5,714,300	5,737,915	23,615	0.4	22	22	18	25
Mississippi	2,938,928	2,939,690	762	-	34	35	41	42
Missouri	6,177,168	6,196,156	18,988	0.3	18	18	21	30
Montana	1,122,878	1,132,812	9,934	0.9	43	43	28	13
Nebraska	1,968,060	1,978,379	10,319	0.5	37	37	27	20
Nevada	3,177,421	3,194,176	16,755	0.5	32	32	23	19
New Hampshire	1,399,003	1,402,054	3,051	0.2	41	41	37	36
New Jersey	9,260,817	9,290,841	30,024	0.3	11	11	13	28
New Mexico	2,113,476	2,114,371	895	-	36	36	40	40
New York	19,673,200	19,571,216	-101,984	-0.5	4	4	51	51
North Carolina	10,695,965	10,835,491	139,526	1.3	9	9	3	5
North Dakota	778,912	783,926	5,014	0.6	47	47	34	17
Ohio	11,759,697	11,785,935	26,238	0.2	7	7	16	35
Oklahoma	4,019,271	4,053,824	34,553	0.9	28	28	12	14
Oregon	4,239,379	4,233,358	-6,021	-0.1	27	27	46	45
Pennsylvania	12,972,091	12,961,683	-10,408	-0.1	5	5	47	44
Rhode Island	1,093,842	1,095,962	2,120	0.2	44	44	39	37
South Carolina	5,282,955	5,373,555	90,600	1.7	23	23	5	1
South Dakota	909,869	919,318	9,449	1.0	46	46	29	11
Tennessee	7,048,976	7,126,489	77,513	1.1	15	15	6	8
Texas	30,029,848	30,503,301	473,453	1.6	2	2	1	3
Utah	3,381,236	3,417,734	36,498	1.1	30	30	10	9
Vermont	647,110	647,464	354	0.1	50	50	42	39
Virginia	8,679,099	8,715,698	36,599	0.4	12	12	8	23
Washington	7,784,477	7,812,880	28,403	0.4	13	13	15	26
West Virginia	1,774,035	1,770,071	-3,964	-0.2	39	39	44	47
Wisconsin	5,890,543	5,910,955	20,412	0.3	20	20	20	27
Wyoming	581,629	584,057	2,428	0.4	51	51	38	24

Dash (-) represents zero or rounds to zero.

(X) Not applicable.

Vintage 2023 data products are associated with Data Management System projects P-6000042, P-7501659, and P-7527355. The U.S. Census Bureau reviewed these data products for unauthorized disclosure of confidential information and approved the disclosure avoidance practices applied to this release (CBDRB-FY24-0085).

Note: The estimates are developed from a base that integrates the 2020 Census, Vintage 2020 estimates, and (for the U.S. only) 2020 Demographic Analysis estimates. For population estimates methodology statements, see <https://www.census.gov/programs-surveys/popest/technical-documentation/methodology.html>. See Geographic Terms and Definitions at <https://www.census.gov/programs-surveys/popest/guidance-geographies/terms-and-definitions.html> for a list of the states that are included in each region. All geographic boundaries for the 2023 population estimates series are as of January 1, 2023.

Table 3. Estimates of the Components of Resident Population Change: July 1, 2022 to July 1, 2023

	Total Population Change ¹	Natural Change	Vital Events		Net Migration		
			Births	Deaths	Total	International ²	Domestic
United States	1,643,484	504,495	3,653,356	3,148,861	1,138,989	1,138,989	(X)
Northeast	-43,330	55,653	581,516	525,863	-98,291	225,009	-323,300
Midwest	126,255	45,838	746,365	700,527	80,181	165,910	-85,729
South	1,423,260	217,342	1,485,069	1,267,727	1,206,146	499,880	706,266
West	137,299	185,662	840,406	654,744	-49,047	248,190	-297,237
Alabama	34,565	-1,562	58,251	59,813	36,128	5,384	30,744
Alaska	130	3,685	9,266	5,581	-3,539	2,004	-5,543
Arizona	65,660	7,702	78,494	70,792	57,814	21,635	36,179
Arkansas	21,328	-907	35,566	36,473	22,202	4,096	18,106
California	-75,423	111,416	414,120	302,704	-187,389	150,982	-338,371
Colorado	36,571	17,399	62,498	45,099	19,167	11,931	7,236
Connecticut	8,470	2,115	34,957	32,842	6,248	15,264	-9,016
Delaware	12,431	-172	10,725	10,897	12,597	2,277	10,320
District of Columbia	8,023	2,607	7,627	5,020	5,460	6,969	-1,509
Florida	365,205	-7,603	223,578	231,181	372,870	178,432	194,438
Georgia	116,077	27,817	125,664	97,847	88,325	30,119	58,206
Hawaii	-4,261	2,355	15,167	12,812	-6,566	4,627	-11,193
Idaho	25,730	5,639	22,456	16,817	20,053	4,664	15,389
Illinois	-32,826	10,453	127,235	116,782	-43,347	40,492	-83,839
Indiana	29,925	7,508	79,587	72,079	22,468	17,869	4,599
Iowa	7,311	3,779	36,898	33,119	3,509	7,112	-3,603
Kansas	3,830	4,439	34,768	30,329	-642	3,932	-4,574
Kentucky	14,591	-2,005	52,380	54,385	16,592	7,627	8,965
Louisiana	-14,274	6,115	56,209	50,094	-20,418	9,274	-29,692
Maine	6,384	-5,053	11,945	16,998	11,425	2,209	9,216
Maryland	16,272	14,199	67,969	53,770	2,072	32,977	-30,905
Massachusetts	18,659	6,983	68,387	61,404	11,498	50,647	-39,149
Michigan	3,980	-4,030	101,911	105,941	7,766	22,817	-15,051
Minnesota	23,615	13,843	63,754	49,911	9,889	14,575	-4,686
Mississippi	762	-1,404	34,628	36,032	2,186	4,800	-2,614
Missouri	18,988	-55	68,334	68,389	19,023	7,852	11,171
Montana	9,934	-171	11,206	11,377	10,094	609	9,485
Nebraska	10,319	5,699	24,195	18,496	4,607	5,441	-834
Nevada	16,755	3,733	33,055	29,322	12,908	4,266	8,642
New Hampshire	3,051	-2,109	12,155	14,264	5,157	859	4,298
New Jersey	30,024	25,492	102,055	76,563	4,632	49,298	-44,666
New Mexico	895	-1,616	20,728	22,344	2,554	3,642	-1,088
New York	-101,984	41,536	207,450	165,914	-142,911	73,867	-216,778
North Carolina	139,526	12,657	121,148	108,491	126,712	29,448	97,264
North Dakota	5,014	2,704	9,649	6,945	2,289	2,298	-9
Ohio	26,238	-2,462	128,826	131,288	28,718	28,081	637
Oklahoma	34,553	2,567	48,073	45,506	31,967	8,380	23,587
Oregon	-6,021	-4,239	39,046	43,285	-1,747	4,304	-6,051
Pennsylvania	-10,408	-11,079	129,489	140,568	951	25,776	-24,825
Rhode Island	2,120	-428	10,006	10,434	2,553	5,777	-3,224
South Carolina	90,600	-1,271	57,581	58,852	91,853	9,291	82,562
South Dakota	9,449	2,813	11,369	8,556	6,600	1,788	4,812
Tennessee	77,513	1,028	82,244	81,216	76,471	13,054	63,417
Texas	473,453	158,253	390,494	232,241	315,301	128,534	186,767
Utah	36,498	24,796	45,965	21,169	11,623	10,285	1,338
Vermont	354	-1,804	5,072	6,876	2,156	1,312	844
Virginia	36,599	15,689	95,669	79,980	21,132	28,117	-6,985
Washington	28,403	14,860	82,523	67,663	13,643	28,919	-15,276
West Virginia	-3,964	-8,666	17,263	25,929	4,696	1,101	3,595
Wisconsin	20,412	1,147	59,839	58,692	19,301	13,653	5,648
Wyoming	2,428	103	5,882	5,779	2,338	322	2,016

(X) Not applicable.

Table 4. Cumulative Estimates of the Components of Resident Population Change: April 1, 2020 to July 1, 2023

	Total Population Change ¹	Natural Change	Vital Events		Net Migration		
			Births	Deaths	Total	International ²	Domestic
United States	3,449,947	915,797	11,811,192	10,895,395	2,534,150	2,534,150	(X)
Northeast	-630,624	46,475	1,889,402	1,842,927	-661,666	520,034	-1,181,700
Midwest	-78,013	17,730	2,438,549	2,420,819	-111,617	368,719	-480,336
South	3,856,761	337,647	4,740,236	4,402,589	3,508,262	1,071,260	2,437,002
West	301,823	513,945	2,743,005	2,229,060	-200,829	574,137	-774,966
Alabama	84,174	-23,913	187,408	211,321	108,227	11,689	96,538
Alaska	32	12,059	30,481	18,422	-12,060	5,296	-17,356
Arizona	273,442	2,534	251,434	248,900	270,441	52,194	218,247
Arkansas	56,242	-10,190	115,300	125,490	66,041	8,751	57,290
California	-573,019	313,064	1,353,681	1,040,617	-874,952	322,998	-1,197,950
Colorado	103,903	49,817	202,910	153,093	53,082	26,501	26,581
Connecticut	11,264	-1,248	112,936	114,184	15,968	37,453	-21,485
Delaware	41,944	-2,211	34,361	36,572	44,124	5,656	38,468
District of Columbia	-10,576	8,288	26,721	18,433	-15,161	13,291	-28,452
Florida	1,072,510	-94,356	703,817	798,173	1,168,132	349,370	818,762
Georgia	315,456	59,887	402,386	342,499	253,772	68,020	185,752
Hawaii	-20,136	9,095	50,277	41,182	-28,964	12,706	-41,670
Idaho	125,609	15,666	72,191	56,525	111,512	7,199	104,313
Illinois	-263,780	14,662	422,189	407,527	-280,776	83,667	-364,443
Indiana	76,757	8,134	256,969	248,835	67,089	39,751	27,338
Iowa	16,577	6,375	118,737	112,362	9,309	20,367	-11,058
Kansas	2,711	8,582	111,993	103,411	-6,819	11,654	-18,473
Kentucky	19,857	-18,274	168,707	186,981	36,533	13,942	22,591
Louisiana	-84,036	4,684	183,333	178,649	-89,834	20,875	-110,709
Maine	32,545	-16,254	38,541	54,795	48,601	5,783	42,818
Maryland	3,000	34,207	221,460	187,253	-33,517	66,062	-99,579
Massachusetts	-31,534	12,255	221,010	208,755	-38,502	110,964	-149,466
Michigan	-40,413	-34,430	335,709	370,139	-9,343	49,036	-58,379
Minnesota	31,111	40,368	207,857	167,489	-11,352	34,624	-45,976
Mississippi	-21,616	-15,223	112,921	128,144	-6,904	7,040	-13,944
Missouri	41,267	-12,984	223,250	236,234	53,416	22,111	31,305
Montana	48,568	-2,864	36,078	38,942	51,602	3,158	48,444
Nebraska	16,414	16,824	78,825	62,001	-860	11,156	-12,016
Nevada	89,559	5,969	108,125	102,156	83,038	18,194	64,844
New Hampshire	24,530	-6,603	39,525	46,128	30,472	6,323	24,149
New Jersey	1,802	50,180	327,246	277,066	-49,614	103,579	-153,193
New Mexico	-3,154	-9,338	68,639	77,977	5,810	11,898	-6,088
New York	-631,104	83,944	676,026	592,082	-701,412	181,264	-882,676
North Carolina	396,032	20,451	388,209	367,758	376,420	66,231	310,189
North Dakota	4,847	8,218	32,070	23,852	-3,152	4,040	-7,192
Ohio	-13,396	-42,708	418,233	460,941	26,900	61,616	-34,716
Oklahoma	94,413	-3,087	155,246	158,333	96,467	16,403	80,064
Oregon	-3,921	-11,635	129,508	141,143	7,358	14,324	-6,966
Pennsylvania	-41,105	-67,343	424,237	491,580	21,873	62,322	-40,449
Rhode Island	-1,409	-3,265	32,968	36,233	1,445	9,589	-8,144
South Carolina	255,133	-18,068	184,396	202,464	272,176	24,121	248,055
South Dakota	32,650	7,007	36,588	29,581	25,245	5,734	19,511
Tennessee	215,703	-18,158	263,010	281,168	231,466	24,369	207,097
Texas	1,357,842	407,567	1,227,704	820,137	947,383	291,163	656,220
Utah	146,120	78,405	149,901	71,496	67,362	17,921	49,441
Vermont	4,387	-5,191	16,913	22,104	9,503	2,757	6,746
Virginia	84,325	39,747	309,542	269,795	43,207	80,621	-37,414
Washington	107,613	51,496	270,104	218,608	57,413	80,910	-23,497
West Virginia	-23,642	-33,704	55,715	89,419	9,730	3,656	6,074
Wisconsin	17,242	-2,318	196,129	198,447	18,726	24,963	-6,237
Wyoming	7,207	-323	19,676	19,999	7,529	838	6,691

(X) Not applicable.

¹ Total population change includes a residual. This residual represents the change in population that cannot be attributed to any specific demographic component. See Population Estimates Terms and Definitions at <https://www.census.gov/programs-surveys/popest/about/glossary.html>.

² Net international migration for the United States includes the international migration of both U.S.-born and non-U.S.-born populations. Specifically, it includes: (a) the net international migration of the non-U.S. born, (b) the net migration of U.S. born to and from the United States, (c) the net migration between the United States and Puerto Rico, and (d) the net movement of the Armed Forces population between the United States and overseas.

Vintage 2023 data products are associated with Data Management System projects P-6000042, P-7501659, and P-7527355. The U.S. Census Bureau reviewed these data products for unauthorized disclosure of confidential information and approved the disclosure avoidance practices applied to this release (CBDRB-FY24-0085).

Note: The estimates are developed from a base that integrates the 2020 Census, Vintage 2020 estimates, and (for the U.S. only) 2020 Demographic Analysis estimates. For population estimates methodology statements, see <http://www.census.gov/programs-surveys/popest/technical-documentation/methodology.html>. See Geographic Terms and Definitions at <http://www.census.gov/programs-surveys/popest/guidance-geographies/terms-and-definitions.html> for a list of the states that are included in each region. All geographic boundaries for the 2023 population estimates series are as of January 1, 2023.

Suggested Citation:
Annual and Cumulative Estimates of the Components of Resident Population Change for the United States, Regions, States, District of Columbia, and Puerto Rico: April 1, 2020 to July 1, 2023 (NST-EST2023-COMP)
Source: U.S. Census Bureau, Population Division
Release Date: December 2023