



ANNUAL REPORT

GILLETTE,
WYOMING
2020

ANNUAL REPORT CONTENTS

- Mayor & City Councilii
- City of Gillette Goals 2020iii
- Message from the Mayor..... 1
- Penny Power2-3
- Finance 4-5
- Utilities.....6-7
- Human Resources 8
- City Clerk..... 9
- Police Department..... 10-11
- Capital Projects..... 12-13
- Code Compliance/Building Inspection ..14
- Planning.....15
- Geographic Information Systems.....16
- Traffic Safety17
- Parks18
- Forestry19
- Solid Waste20
- Vehicle/Facilities Maintenance.....21
- Energy Capital Sports Complex..... 22
- Streets 23
- Animal Shelter 26-27
- Gillette Public Access Television 28
- Information Technology 29
- More Information on the City..... 30-31

Vision Statement For Our Future

Gillette is a growing city with a strong local economy, and serves as a major regional center.

Our Gillette Community is friendly for families, supports an active lifestyle, and is attractive and aesthetically pleasing.

Our Mission

Gillette City Government is financially responsible, provides quality customer-friendly services and has first class city infrastructure & facilities.

P.R.I.D.E.

Productivity
Do it right, Do it Efficiently.

Responsibility
Own it, Solve it together.

Integrity
Consistently do the right thing for the right reason.

Dedication
Supporting continuous improvement through teamwork and loyalty.

Enthusiasm
Enjoying your job and going the extra mile.



Gillette was ranked #4 in Wyoming in 2020

- Lots of Local Amenities
- Low Crime Rate
- High Income per Capita
- High Graduation Rate

MAYOR & CITY COUNCIL



Mayor
Louise Carter-King

Mayor Louise Carter-King began serving on the Gillette City Council in 1991, serving Ward 1 until 2004. She was elected councilwoman again in 2008 and served Ward 1 until she was sworn in as Mayor in January of 2015.

Mayor Carter-King has the distinction of being the first woman mayor of the City of Gillette. She is also the first 2nd Generation Mayor of Gillette. Her father, Herb Carter, served as Mayor from 1982-1990.



Greg Schreurs
Ward 1



Billy Montgomery
Ward 2



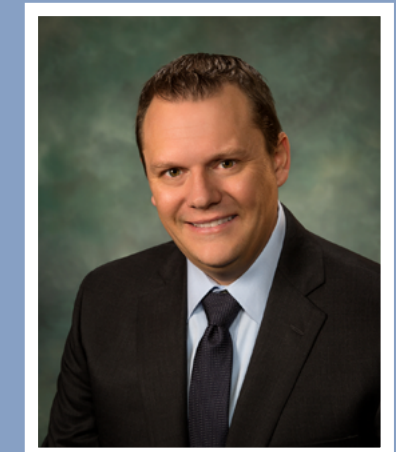
Shay Lundvall
Ward 3



Eric Hanson
Ward 1

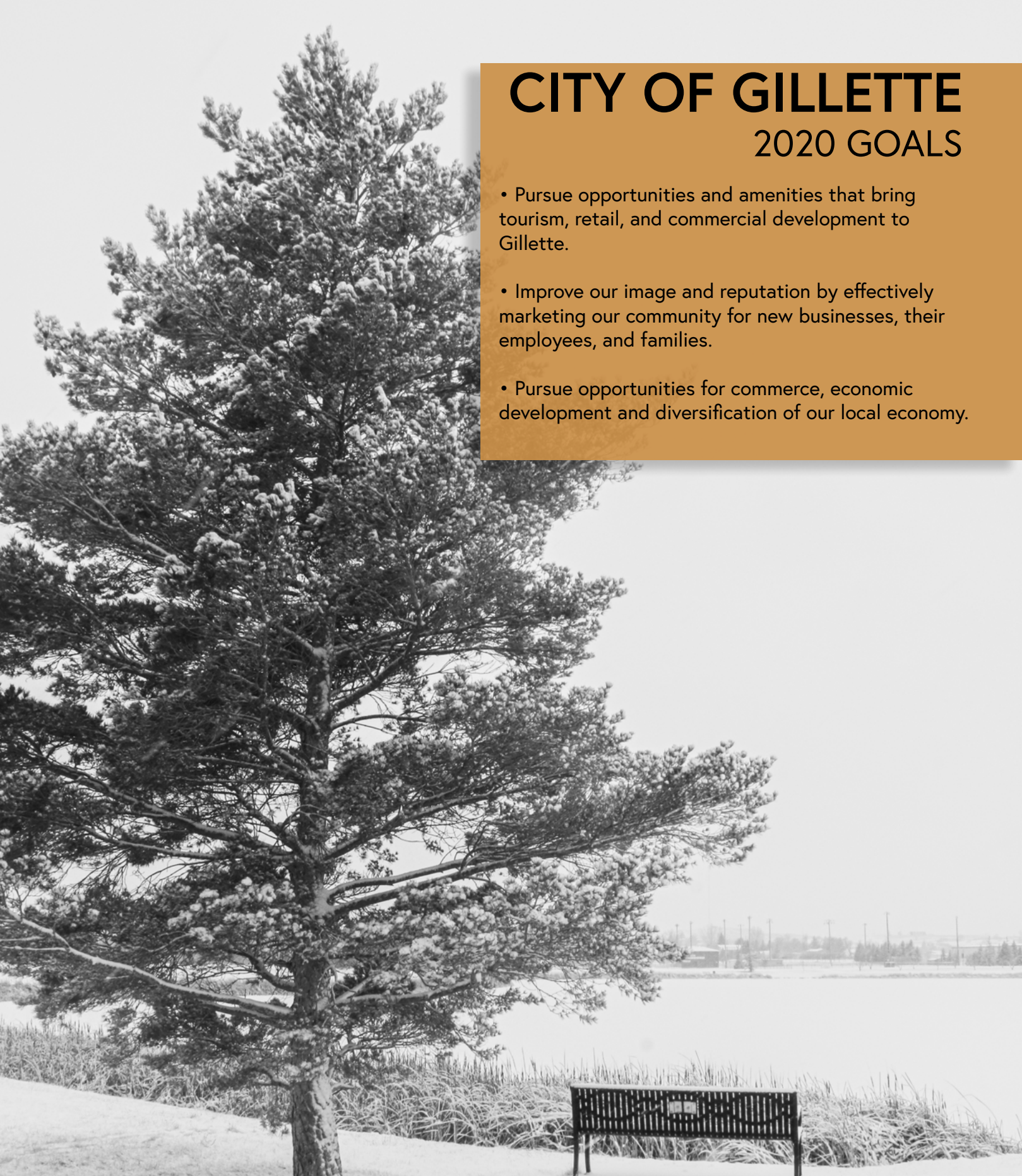


Tim Carsrud
Ward 2



Nathan McLeland
Ward 3

Want to find your City Council Ward? Visit www.gillettewy.gov/citycouncil and click on the City Voting Ward Map.



CITY OF GILLETTE

2020 GOALS

- Pursue opportunities and amenities that bring tourism, retail, and commercial development to Gillette.
- Improve our image and reputation by effectively marketing our community for new businesses, their employees, and families.
- Pursue opportunities for commerce, economic development and diversification of our local economy.

COVER PHOTOS: Heidi Gross-Gillette College, Mikel Scott-Council of Community Services, Megan Taylor & Erin Galloway-Edible Prairie Project, Nate Grotrian-Boys & Girls Club, Mary Melragno-Y.E.S. House, Quinn Goldhammer-AVA Community Art Center, Phil Christopherson-Energy Economic Development Services, Jessica Seders-Gillette Main Street & Visitors Center

A MESSAGE FROM THE MAYOR



It is a privilege to present to you the City of Gillette Annual Report. 2020 was an interesting year, to say the least. Every year presents its challenges and surprises and this past year was certainly no exception.

Even though the year did not go the way we expected, we were still able to accomplish many things this year that will serve us well into the future. We completed long-awaited remodels of our City West facility and Animal Control building to create efficiencies for our employees and to better serve our customers; both the two-legged and four-legged varieties.

The City received a generous donation of trees which will be placed on Warlow Drive near the Children's Memorial Walkway at McManamen Park. We originally intended them to be on the north side of the Gurley Overpass to enhance the beautification project that was recently completed but, due to underground utilities in that area, adding trees and an irrigation system would have proven difficult to maintain, so McManamen Park was chosen as an alternative location. Not only will the trees function as a natural buffer between the existing pathway and Warlow Drive, but an irrigation system is already in place at the Children's Memorial Walkway, saving time and money. We will see this project take place early in 2021.

We also saw an unexpected opportunity occur to assist Gillette College in becoming its own district. Currently, Gillette College is part of the Northern Wyoming Community College District based in Sheridan.

This affords our College with very little representation at the executive level and little opportunity to make important decisions. This was realized when the major operational changes were made to Gillette College programs and operations in early 2020 without any local input. Through a truly collaborative effort, our community leaders worked to begin the process of creating our own college district. We were successful in our first steps but the process will continue in 2021 as the Wyoming State Legislature will need to consider the matter as well.

Another exciting opportunity that arose in 2020 (but wasn't announced until 2021) is the change of location for the International Pathfinder Camporee. For over 20 years, this event has been in Oshkosh, Wisconsin. Recently this group began looking for an alternative location for their once-every-5-year event. The last Camporee had over 55,000 people attend and had a \$25 million economic impact. In August of 2024, we anticipate even greater numbers will come to Gillette and Campbell County making us the largest city in Wyoming for a week. We look forward to showing each attendee our Western hospitality and our can-do attitude!

2021 promises to be another interesting and exciting year. I look forward to meeting the challenges ahead with you.

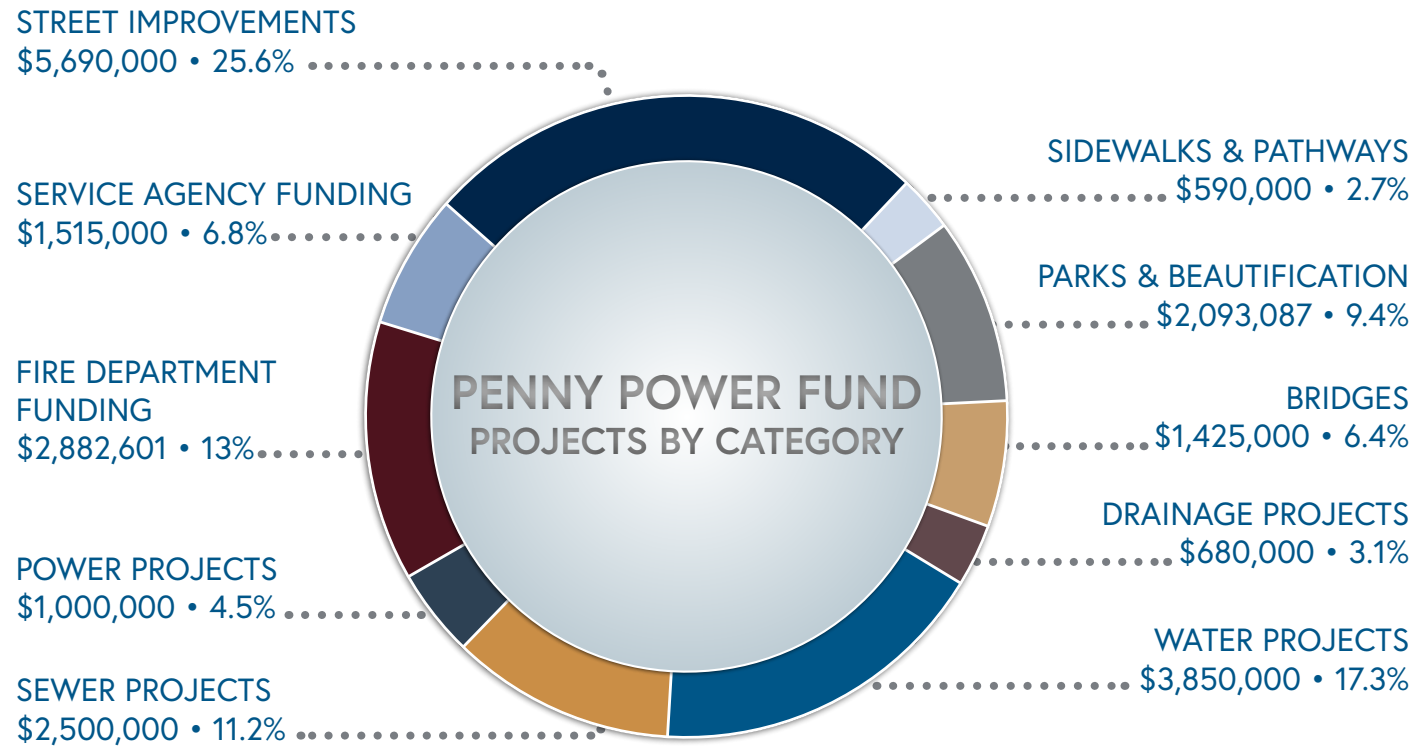
Louise Carter-King
Mayor Louise Carter-King

201 East 5th Street • Gillette • www.gillettewy.gov • 307.686.5203

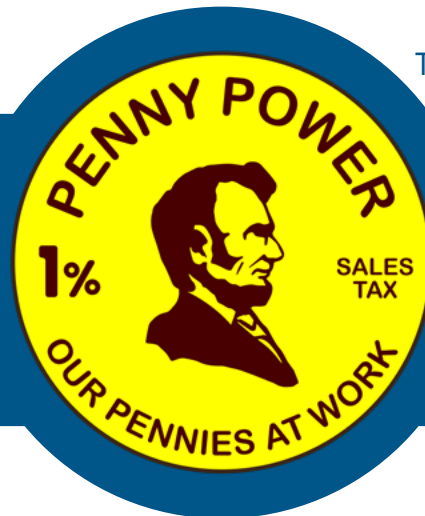


PENNY POWER

71% OF PENNY POWER FUNDS invested in infrastructure projects



To learn more about Penny Power, visit www.gillettewy.gov/pennypower



Since 1976, Campbell County voters have approved the Penny Power Tax, and over the past 44 years, "Penny Power" has funded road, water, sewer, drainage, parks, and other improvements.

PENNY POWER

THESE PROJECTS INCLUDE: (but are not limited to)

- 2020 Pavement Management System
- 2021 Alley Pavement Management System
- Goldenrod Additional Repairs
- Pavement Rehabilitation
- Foothills Boulevard Curves/Drainage
- Gurley Overpass Maintenance/Replacement Design
- Rourke Avenue Improvements
- WYDOT Planning Study
- 2021 Water Main Replacement
- Water Tank Rehabilitation
- Water Tank Apron Repairs
- 2021 Sanitary Sewer Main Replacement
- Traffic Signal Improvements
- Pedestrian Crossing Enhancements
- Remington Drainage Improvements
- Energy Park Drainage Improvements
- Providence Park Drainage Improvements
- Fire Department Funding
- Police Department Radio Replacement
- Park Improvements
- Irrigation Improvements
- Energy Capital Sports Complex Playground
- Collins Heights Shelter
- Northland Village Playground Replacement
- Park Equipment
- Playground Resurfacing
- Pathway Repairs
- Donkey Creek Pathway Connections
- Social Service Agency Funding
- Adopt-a-Planter
- Roadway Beautification



To learn more about Penny Power, visit www.gillettewy.gov/pennypower



Sage Bluffs Irrigation Project



Fire Department Funding



2020 Pavement Management System Project



201 East 5th Street • Gillette • www.gillettewy.gov • 307.686.5203



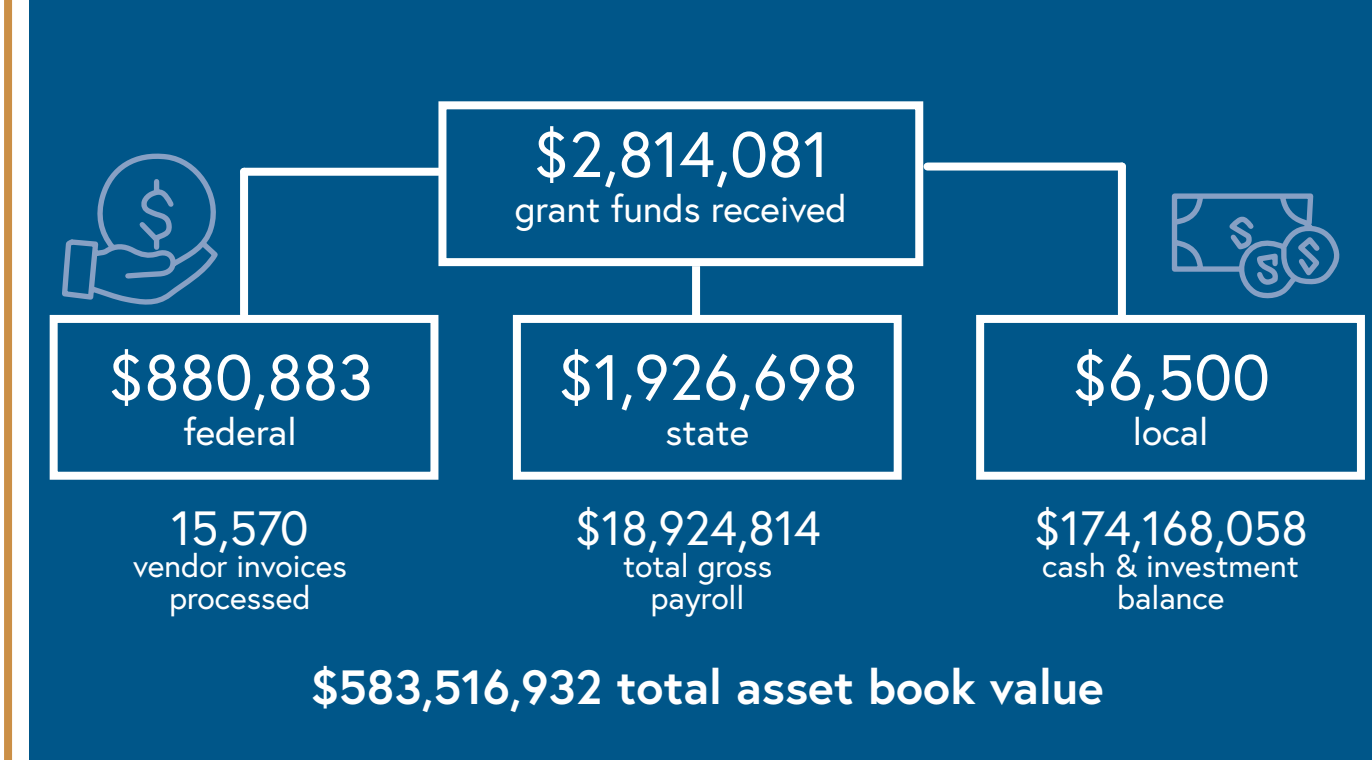
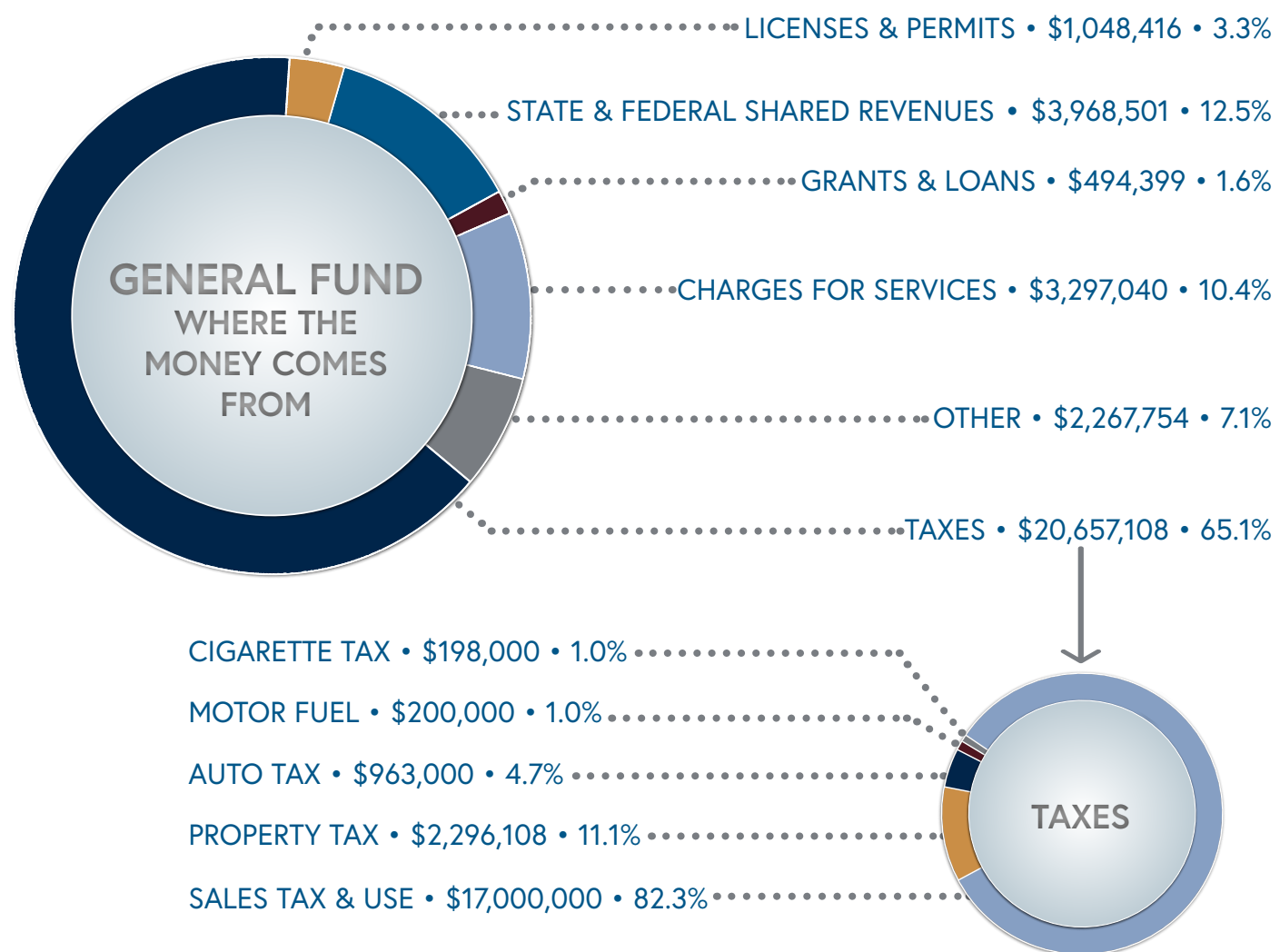
201 East 5th Street • Gillette • www.gillettewy.gov • 307.686.5203

COMPREHENSIVE ANNUAL FINANCIAL REPORT AWARD 2020

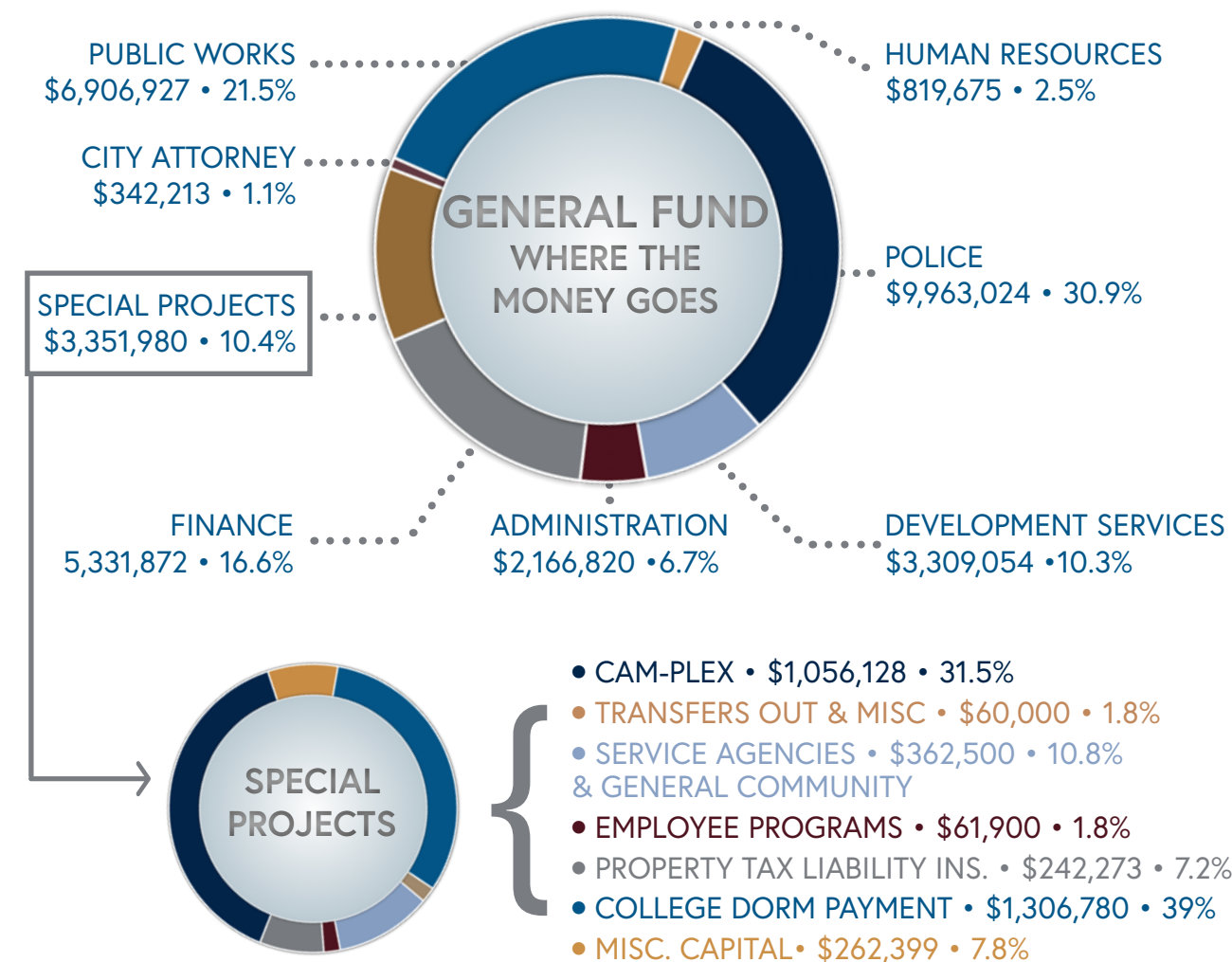


For more information about the Finance Division please visit www.gillettewy.gov/finance

GENERAL FUND- WHERE THE MONEY COMES FROM...



GENERAL FUND- WHERE THE MONEY GOES...



UTILITIES



UTILITIES

Electrical Engineering is continuing to add secondary services to the Milsoft Model. Having the secondary lines in the model will help Electrical Services achieve their reliability numbers. In 2020 there were 5,787 services added to the model, bringing the total to 15,322. Electrical Engineering and SCADA installed 46.5 miles of fiber optic raceway in 2020.

Want to learn more about the Utilities Department? Please visit our website and you can find them here at www.gillettewy.gov/utilities



ELECTRICAL ENGINEERING

338,040

MEGAWATTS PURCHASED

2019:	347,843
2018:	346,445
2017:	348,659
2016:	349,180



ELECTRICAL SERVICES

87.8%

TOTAL PERCENTAGE OF STREET LIGHTS CONVERTED TO LEDS

2019:	78.8%
2018:	67.8%
2017:	62.0%
2016:	57.5%



SUPERVISORY CONTROL & DATA ACQUISITION (SCADA)

222

FIBER OPTIC SYSTEMS MAINTAINED

2019:	256
2018:	211
2017:	174
2016:	159



WASTEWATER TREATMENT FACILITY

94,726

FEET OF SEWER LINE INSPECTED

2019:	81,500
2018:	68,046
2017:	58,066
2016:	56,306



WATER DIVISION

378.1

MILES OF WATER MAIN MAINTAINED

2019:	375.8
2018:	372.6
2017:	357.5
2016:	357.0



UTILITIES ADMINISTRATION

17,315

UTILITY ACCOUNTS SERVICED

2019:	17,233
2018:	17,135
2017:	17,054
2016:	16,706





2020 EMPLOYEE OF THE YEAR

JEFF CONNOR - Master Fleet Technician

"Jeff takes personal responsibility and has extensive knowledge of buying, maintaining, and operating our assets that have reduced costs for the City."

HUMAN RESOURCES

SAFETY

The Safety Department saw a reduction in Preventable Accidents by more than 48% and more than 30% drop in OSHA Recordables in 2020. In addition there was a 100% drop in Restricted-Duty Cases. These reductions were essential to the drop in Workers' Compensation Costs of over 750% from 2019.

WORKFORCE

The Human Resources Department strives to provide consistent and collaborative services to the organization as well as to each employee by providing services to 8 departments; within those 8 departments are 35 divisions with approximately 271 employees.

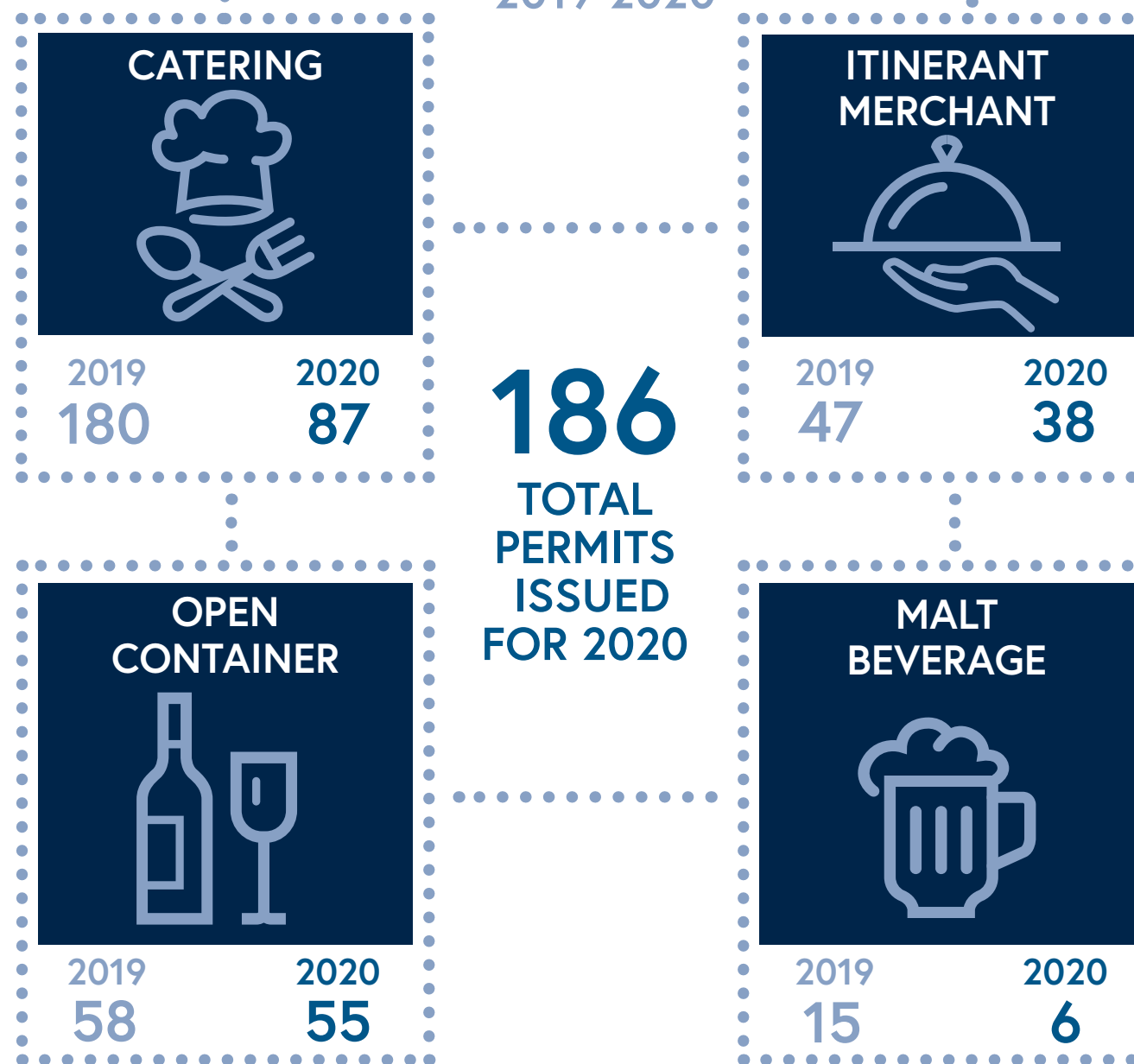
RECRUITING

Human Resources received and processed 1,174 applications, interviewed 184 applicants and posted 38 position openings. There was a 1.5% decrease in the employee turnover percentage from 2019.

CITY CLERK



PERMITS ISSUED 2019-2020



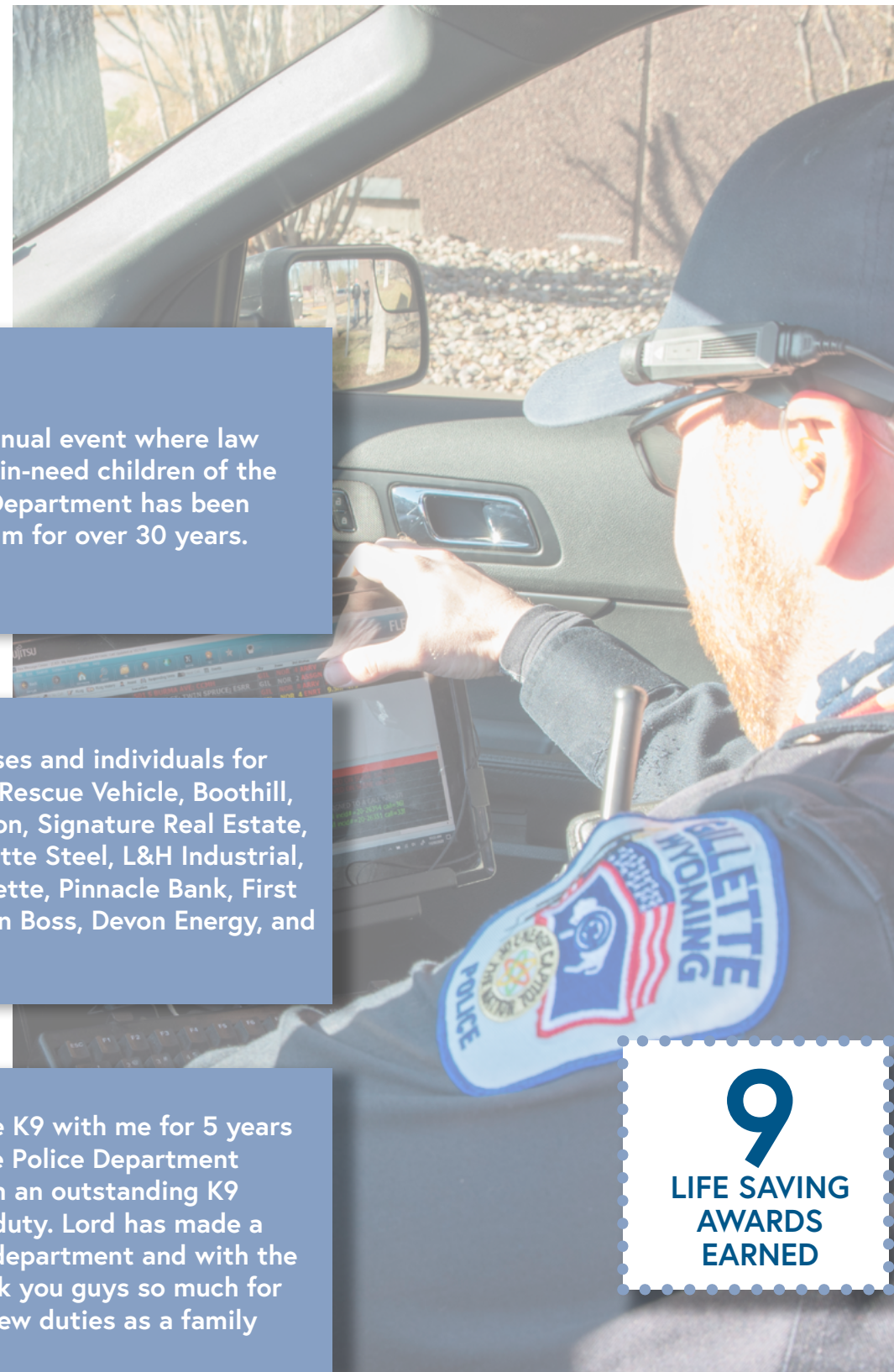
Want to apply for a permit?
Visit our website at www.gillettewy.gov/permit





POLICE DEPARTMENT

The Police Department provides fingerprinting services Tuesday, Wednesday and Thursday from 1:00pm-4:30pm. There is a \$5.00 fee and the person being fingerprinted must provide a government issued ID. To get more information please visit www.gillettewy.gov/police



December 2020 - Shop with a Cop is an annual event where law enforcement shops with in-need children of the community. The Police Department has been involved with this program for over 30 years.



Thanks to these businesses and individuals for contributing to the GPD Rescue Vehicle, Boothill, Powder River Construction, Signature Real Estate, First National Bank, Gillette Steel, L&H Industrial, Jane Glaser, Bank of Gillette, Pinnacle Bank, First Northern Bank, DRM, Sign Boss, Devon Energy, and Bernie Weinhardt.



K9 Lord Retired in 2020- "Lord was a dual purpose K9 with me for 5 years working with the Gillette Police Department in Wyoming. He has been an outstanding K9 partner both on and off duty. Lord has made a large impact within the department and with the citizens of Gillette. Thank you guys so much for supporting us in Lord's new duties as a family dog." -Officer T. Johnson

9
LIFE SAVING
AWARDS
EARNED

POLICE DEPARTMENT



29,121
CALLS
RESPONDED
TO IN 2020

NARCOTICS STATS	2019	2020	% CHANGE
Narcotics Related Cases	540	529	-2.04%
Marijuana Seized	2,800	2,460.97	-12.11%
Methamphetamine Seized	892.09	714.66	-19.89%
Cocaine Seized	6.95	13.05	87.77%
Spice Seized	57.66	219	279.81%
Heroin Seized	9.16	20.7	125.98%

VEHICLE CRASHES	2019	2020	% CHANGE
Crashes	1,279	1,176	-8.05%
Number of Crashes/1,000 pop.	27.62	27.30	-1.16%

OFFENSES	2019	2020	% CHANGE
Assault, Aggravated	32	51	59.38%
Burglary	66	60	-9.09%
Rape	11	11	0.00%
Assault, Simple	317	280	-11.67%
Driving Under the Influence	274	236	-13.87%
Drunkenness	162	138	-14.81%
Embezzlement	10	9	-10.00%
Fraud	174	165	-5.17%

CRIMINAL ARRESTS	2019	2020	% CHANGE
Adults	1,922	1,724	-10.30%
Juveniles	447	346	-22.60%

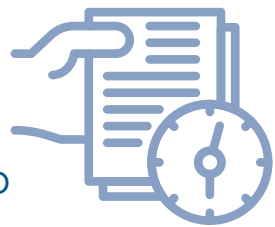


CAPITAL PROJECTS

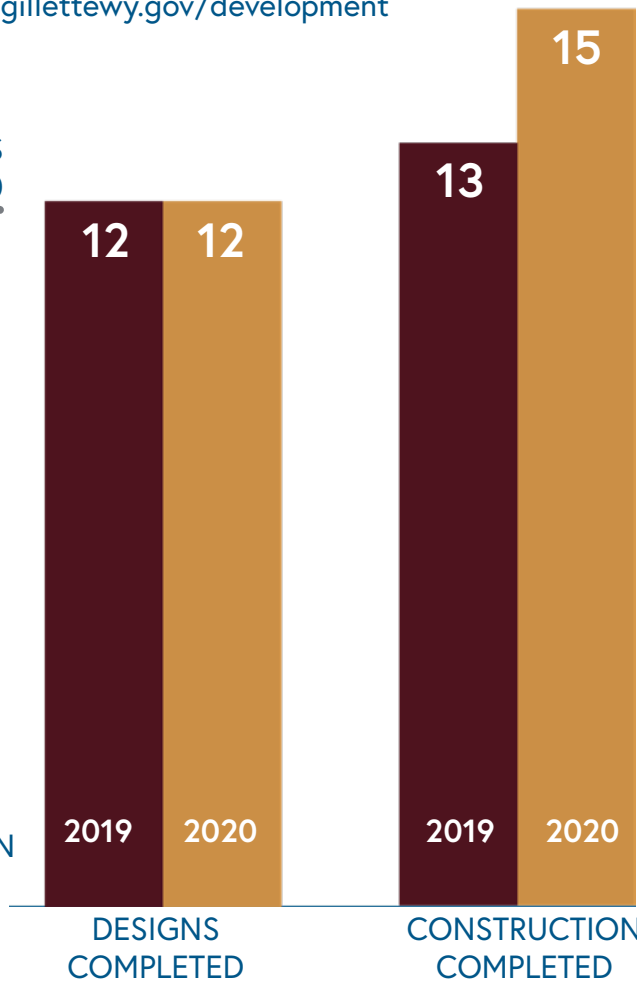
Provides a broad range of professional civil and municipal engineering services to develop, maintain and improve the City's infrastructure with our Capital Improvement Program. To learn more about Capital Projects visit www.gillettewy.gov/development



2 STUDIES/SURVEYS CONDUCTED



1 ON-GOING CONSTRUCTION PROJECT



Donkey Creek Pathway



Donkey Creek Pathway

CAPITAL PROJECTS

Photos are some of the projects that were completed in 2020 (not inclusive).



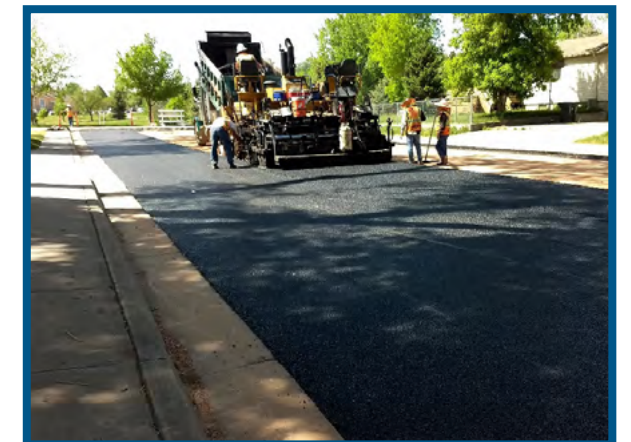
5th Street



6th Street



7th Street



Brooks Avenue



Bundy Avenue



Flying Circle



CODE COMPLIANCE

Did you know the City of Gillette has a Code Compliance Division which handles issues such as tall grass and weeds on private property? The Code Compliance Division operates year round and addresses unlicensed/inoperable, wrecked or junked motor vehicles and motor vehicle parts; appliances; tires and buckets; and garbage and debris. Additionally, the Code Compliance Division is responsible for issuing Daycare Zoning Approval, Home Occupation Permits, and Temporary Sign Permits. For more information visit www.gillettewy.gov/codecompliance



844
UNLICENSED/
INOPERABLE
VEHICLES

- 12 Sidewalk blockage cases
- 2 Zoning violation cases
- Abated 31 properties

98

APPLIANCES
CASES



213

DEBRIS
CASES



828

GRASS & WEED
CASES



4

DAYCARE
INSPECTION
CASES

BUILDING INSPECTION

4,097

INSPECTIONS
FOR THE YEAR

2,070

PERMITS
FOR THE YEAR



618

LICENSED
CONTRACTORS
FROM 25 STATES
& 1 FROM
CANADA

\$185,825

REVENUE FROM
WATER & SEWER
TAP FEES & ELECTRICAL
CAPITAL CONTRIBUTION

\$78,329.50

REVENUE FROM
PERMITS & PLAN
REVIEW



PLANNING

The City of Gillette Planning Division continued work on projects such as the Zoning Ordinance Rewrite, the Urban Chicken Ordinance, and the Enforcement of Pothole Ordinance. In addition here are the total permits and cases covered in 2020.

335

TOTAL PERMITS ISSUED
IN 2020

- 1 Commercial Alteration
- 47 Deck Permits
- 103 Fence Permits
- 24 Garage/Shop Permits
- 37 House Permits
- 22 Commercial Building Permits
- 47 Shed Permits
- 35 Sign Permits
- 15 Special Use/Vendor Permits
- 4 Retaining Wall Permits

CASE INFORMATION

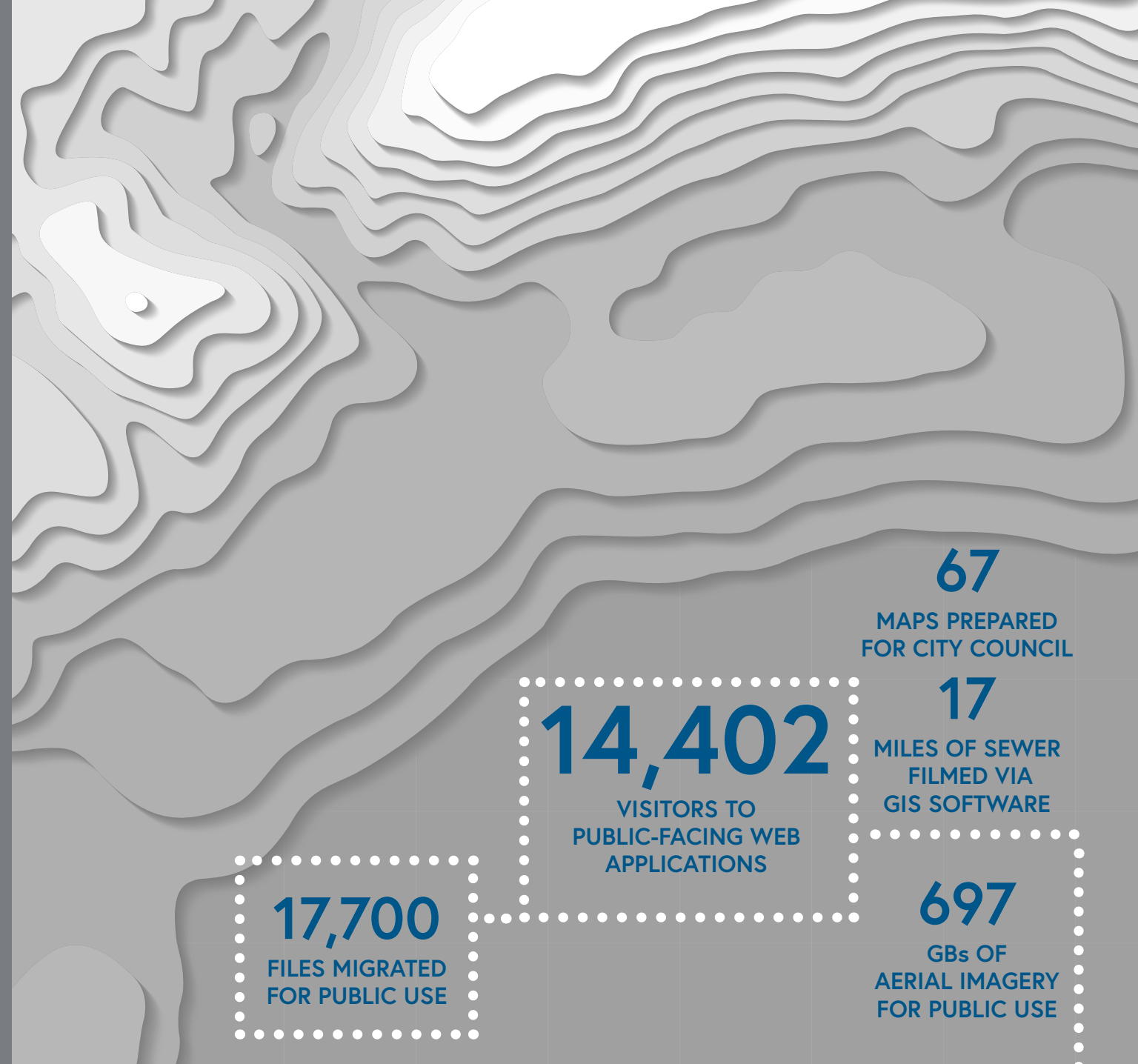
- 1 Zoning Text Amendments
- 3 Zoning Map Amendments
- 11 Commercial Site Plans
- 18 Subdivision Plats
- 1 Easement Vacate Request
- 1 Telecommunication Tower Request
- 1 Development Plan



For more information about the Planning
Division please visit

www.gillettewy.gov/planning





GEOGRAPHIC INFORMATION SYSTEMS

The GIS Division maintains a gallery of interactive maps and applications, including maps of historic buildings, parks and pathways, as well as applications for near real-time data on street sweeping, snow removal, and road closures.

Visit the GIS Division on our website at www.gillettewy.gov/GIS

TRAFFIC SAFETY

The Traffic Safety Division performs a variety of activities associated with traffic signs, signals, pavement markings, and traffic studies to improve and help maintain a safe transportation network within the City of Gillette.



Requests for a traffic signal, sign, or crosswalk should be made to the City Engineer. We may then decide to do a traffic study to see whether it is warranted. To let us know of a request, email us at cityeng@gillettewy.gov

Want to find out more about traffic safety? Go to our website at www.gillettewy.gov/trafficsafety



PARKS DIVISION

464

PARKS RESERVATIONS

988

FLATS OF ADOPT-A-PLANTER FLOWERS

8

SOFTBALL & LITTLE LEAGUE TOURNAMENTS

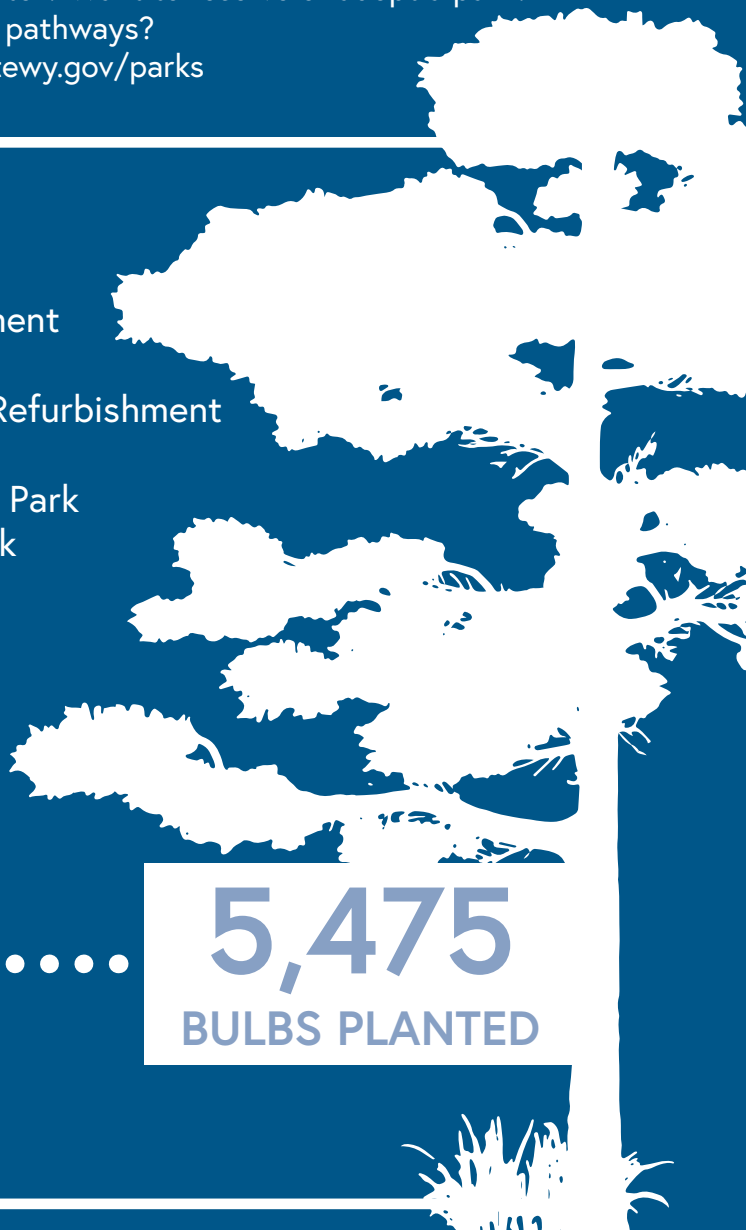
Want to learn how you can adopt a planter? Want to reserve or adopt a park? Find popular pathways? Visit www.gillettewy.gov/parks

2020 PARKS HIGHLIGHTS

- Sierra Glen Playground Replacement
- Westridge Park Playground Replacement
- Dalbey RV Dump Station
- Dalbey Fishing Lake Bridge Repairs/Refurbishment
- Sage Bluffs Bridges Refurbish
- New Irrigation System at Sage Bluffs Park
- Track Trails Kiosk at McManamen Park
- New Planter at Dalbey Park



5,475 BULBS PLANTED



FORESTRY DIVISION

256 TREES TRIMMED

96 TREES PLANTED

166 TREES REMOVED



The Forestry Division cares for over 8,000 trees and shrubs located in City parks, five boulevard beautification areas, City facilities and Rights-of-Way throughout the city. Here is a look at what happened in 2020 in the Forestry Division.

Trees were treated for Spider Mites, Honey Locust Plant Bug and Mountain Pine Beetle and a management plan was created for treatment of the Mountain Pine Beetle. The Christmas Tree recycling program returned for the 10th year.

To learn more about the Forestry Division visit www.gillettewy.gov/forestry



SOLID WASTE DIVISION

13,383
TOTAL CUSTOMERS SERVED



2,843 YARD WASTE CUSTOMERS SERVED

839.02
RESIDENTIAL YARD WASTE TONS DUMPED

309
COMMERCIAL CUSTOMERS SERVED

1,625.64
COMMERCIAL SOLID WASTE TONS DUMPED



10,231 RESIDENTIAL CUSTOMERS SERVED

11,592.99
RESIDENTIAL SOLID WASTE TONS DUMPED

14,057.65
TOTAL REFUSE TONS

For more information on the Solid Waste Division visit www.gillettewy.gov/solidwaste



VEHICLE MAINTENANCE

For more information about our vehicle maintenance department visit www.gillettewy.gov/fleet

AVG. WORK ORDER PER MECHANIC PER DAY
2.05

ONLINE AUCTION REVENUE (returned to vehicle replacement fund)
\$110k

TOTAL FLEET VEHICLES
202

WORK ORDERS COMPLETED
2,676
BY **5** MECHANICS

90
REPAIRED VEHICLES DAMAGED BY HAIL

PIECES OF EQUIPMENT
431

FACILITIES MAINTENANCE

WORK ORDERS COMPLETED
446

- City West Remodel
- Animal Control Remodel
- Upgraded lighting & safety barriers



For more information about our facility maintenance department visit www.gillettewy.gov/facilities





ENERGY CAPITAL SPORTS COMPLEX

\$1.4M
ESTIMATED ECONOMIC IMPACT FOR GILLETTE & CAMPBELL COUNTY

11 EVENTS IN 2020

198 TEAMS HOSTED IN 2020

For more information visit, www.gillettewy.gov/ecsc

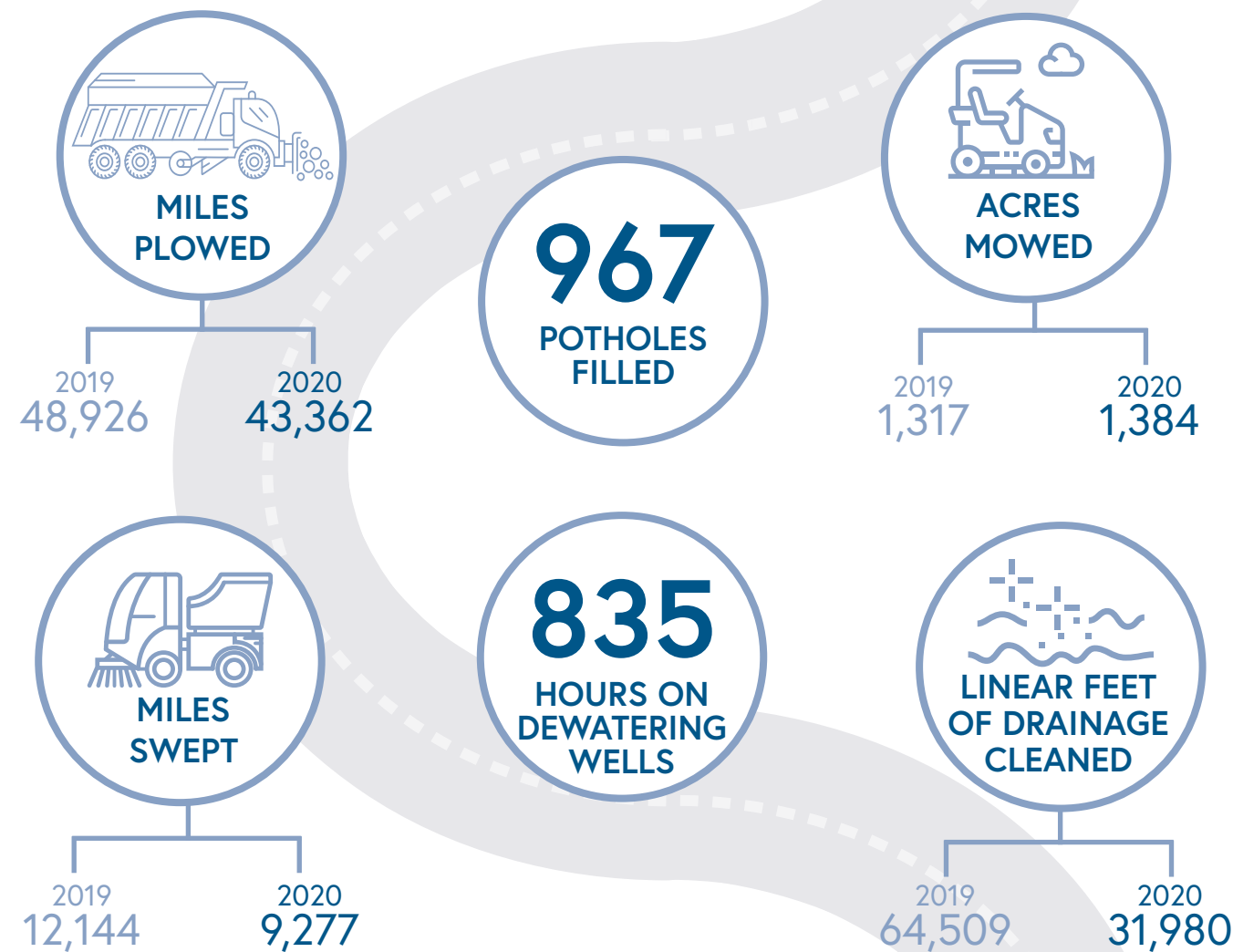
Want to find out more about the ECSC? Email sportsfields@gillettewy.gov

FIELDS IN USE MARCH THROUGH OCTOBER



PUBLIC WORKS - STREETS DIVISION

The Streets crew maintains City streets, which includes patching potholes, sweeping streets, de-watering wells, cleaning drainage systems, mowing rights-of-way, and snow & ice control during winter.



There is a Streets operator on call 24 hours a day. In case of an emergency after hours, please call the Gillette Police Department at 682-5155 and they will contact the on-call person.

Want to find out more about snow plowing and street sweeping?
Visit www.gillettewy.gov/streets





1,944
TOTAL # OF
LICENSES
SOLD

A REMINDER FROM ANIMAL CONTROL
With the increase in animal bite incidents, Animal Control would like to remind all pet owners:

- keep their pets vaccinated
- keep them contained and under control at all times
- never leave an animal unattended with a young child.

Many of the bites seen by animal control involve a child being bitten by an animal living in the home. Always have adult supervision during animal and children interactions.

590
ANIMALS ADOPTED
IN 2020

2018 761 ADOPTED
2019 869 ADOPTED

131
ANIMAL-RELATED
BITE INCIDENTS

1,854
ANIMALS HANDLED
BY THE SHELTER

3,192
ANIMAL-RELATED
CALLS HANDLED

1,163
ANIMALS PICKED UP
RUNNING AT LARGE



Interested in how you can adopt a pet? Visit the Petfinder Page. Or need to obtain a license? Visit the Animal Shelter page to find out more www.gillettewy.gov/animalcontrol



NEW OPERATIONS AT THE ANIMAL SHELTER

The animal shelter does not accept unwanted or surrendered animals without an appointment. Please call 307-686-5249 if you need to re-home a dog or cat. In an effort to reduce the number of people in the lobby at the animal shelter we are asking that customers call 307-686-5249 before coming into the shelter. We will be allowing one person or family into the shelter at a time so please stay in your vehicle and call us so we can make sure the lobby is clean and ready for you to enter. We thank you for your patience and understanding.

The Animal Control Division is composed of one Animal Control Supervisor, three Animal Control Officers, and two Animal Shelter Assistants. The Animal Control Division provides enforcement of the City's ordinances on animal control. They work to balance health, safety, and welfare needs of people and animals. The Animal Shelter is a City owned and operated facility. It provides housing and other shelter services for Gillette and Campbell County.



SUBSCRIBE

FIND US ON YOUTUBE
@gillettepublicaccesstelevision.

Gillette Public Access Television updated its master control room in 2020. The upgrades converted analog equipment to digital equipment along with other equipment to accommodate a High Definition Signal. With the upgrades GPA-TV is now able to provide an HD signal from in-house and off-site locations throughout the City to all three of our channels on our web streaming service.



Created a total of 156 GPA produced programs with a total of 104 hours of runtime.
The on-demand views compared to 2019 OF 6,961

INCREASED IN 2020 TO 22,512 VIEWS.

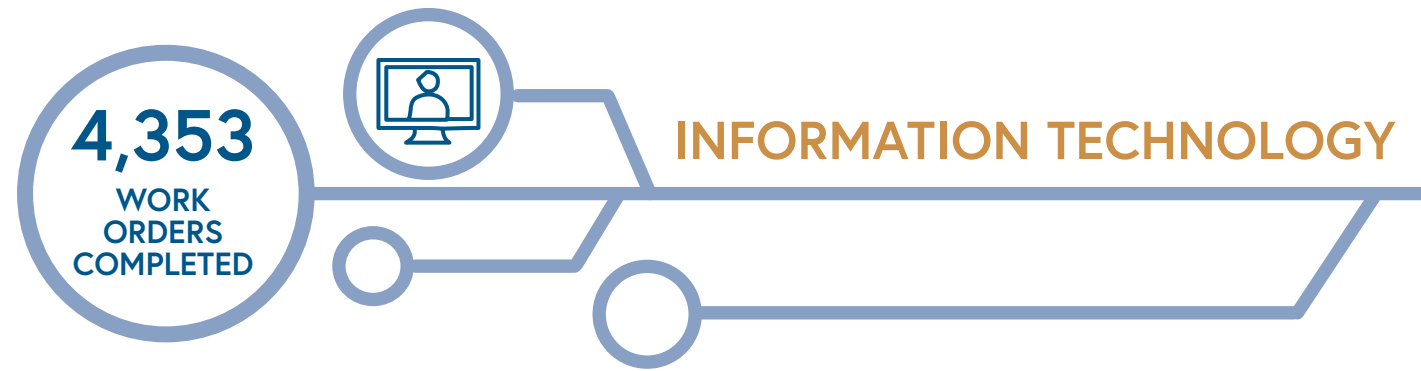
2019	2020
12 NEW EPISODES	7 NEW EPISODES
32 SEGMENTS	16 SEGMENTS
2,890 TOTAL VIEWS	9,035 TOTAL VIEWS



Visit www.gillettewy.gov/gpa to view our Public Access, Education Access, and Government Access channels streaming 24/7 or find many of our recorded events archived there as well.



201 East 5th Street • Gillette • www.gillettewy.gov • 307.686.5203



INFORMATION TECHNOLOGY



For more information about the IT department visit www.gillettewy.gov/it

TOP 5 MOST VISITED WEB PAGES

- 1 "PAY YOUR BILL ONLINE"
- 2 "EMPLOYMENT OPPORTUNITIES"
- 3 "ANIMAL CONTROL"
- 4 "BENCH WARRANTS"
- 5 "GPA CHANNEL 192 ARCHIVE"



201 East 5th Street • Gillette • www.gillettewy.gov • 307.686.5203





CITY OF GILLETTE NOTIFICATION PROGRAM

PRODUCTIVITY › DO IT RIGHT, DO IT EFFICIENTLY

RESPONSIBILITY › OWN IT, SOLVE IT TOGETHER

INTEGRITY › CONSISTENTLY DO THE RIGHT THING,
FOR THE RIGHT REASON

DEDICATION › SUPPORTING CONTINUOUS IMPROVEMENTS
THROUGH TEAMWORK AND LOYALTY

ENTHUSIASM › ENJOYING YOUR JOB &
GOING THE EXTRA MILE

GET THE NEWS YOU WANT, HOW YOU WANT

The purpose of this program is to deliver relevant (non-emergency) information to our residents in a format of their choosing - phone, email, text, or Everbridge App (available from the Apple Store and Google Play).

SUBSCRIPTIONS

Here are the subscriptions to choose from. Choose as many (or as few) as you would like. The subscription list is subject to change based on interest.

- Animal Shelter Information
- City Council Meetings
- City News (Press Releases)
- City Office Closures
- City Pool Information (Pool closures)
- Crime Stoppers
- Road Closures
- Snow Emergencies
- Trash, Recycling, Curbside Yard Waste Notices
- Utility Outages

There are a couple of ways to sign up for the program. You can access the member portal from the City website or from the Everbridge App. For a complete guide on how to get signed up for these please visit our website at www.gillettewy.gov and under Quick Links click on Notification Program.

